

Power Lab 120

Operator's Manual

READ THIS BOOK

This book has important information for the use and safe operation of this machine. Failure to read this book prior to operating or attempting any service or maintenance procedure to your American Sanders machine could result in injury to you or to other personnel; damage to the machine or to other property could occur as well. You must have training in the operation of this machine before using it. If your operator(s) cannot read this manual, have it explained fully before attempting to operate this device.

Table of Contents

Contents

Operator Safety Instructions.....	4
Safety Instructions.....	5
Instructions For Use.....	6
Troubleshooting.....	6
Power Lab 120 Assembly.....	7

WARNING!

The Products sold with this Manual contain or may contain chemicals that are known to certain governments (such as the State of California, as identified in its Proposition 65 Regulatory Warning Law) to cause cancer, birth defects or other reproductive harm. In certain locations (including the State of California) purchasers of these Products that place them in service at an employment job site or a publicly accessible space are required by regulation to make certain notices, warnings or disclosures regarding the chemicals that are or may be contained in the Products at or about such work sites. It is the purchaser's responsibility to know the content of, and to comply with, any laws and regulations relating to the use of these Products in such environments. The Manufacturer disclaims any responsibility to advise purchasers of any specific requirements that may be applicable to the use of the Products in such environments.

*****This product is intended for commercial use only*****

Operator Safety Instructions

In this Operation Manual you will find three statements that you must read and observe to ensure safe operation of this device.

DANGER means: Severe bodily injury or death can occur to you or other personnel if the **DANGER** statements found on this machine or in this Operation Manual are ignored or are not adhered to. Read and observe all **DANGER** statements found in this Operation Manual and on your device.

WARNING means: Injury can occur to you or to other personnel if the **WARNING** statements found on your machine or in the Operation Manual are ignored or are not adhered to. Read and observe all **WARNING** statements found in this Operation Manual and on your device.

CAUTION means: Damage can occur to the machine or to other property if the **CAUTION** statements found on your machine or in this Operation Manual are ignored or are not adhered to. Read and observe all **CAUTION** statements found in this Operation Manual and on your device.



DANGER:



Failure to read the Owner's Manual prior to operating or servicing your American Sanders machine could result in injury to you or to other personnel; damage to the machine or to other property could occur as well. You must have training in the operation of this machine before using it. If you or your operator(s) cannot read English, have this manual explained fully before attempting to operate this device.



DANGER:

- A. Electrocution could occur if the Power Lab is being serviced while it is connected to a power source. Disconnect the power supply before servicing.
- B. Electrocution or fire could occur if the Power Lab is being operated with a damaged power cord. Do not carry the device by the power cord.
- C. Shock hazard. Do not use the device if it has been rained on or sprayed with water.



WARNING:

Any alterations or modifications of this device could result in damage to the device or injury to the operator or other bystanders. Alterations or modifications not authorized by the manufacturer voids any and all warranties and liabilities.



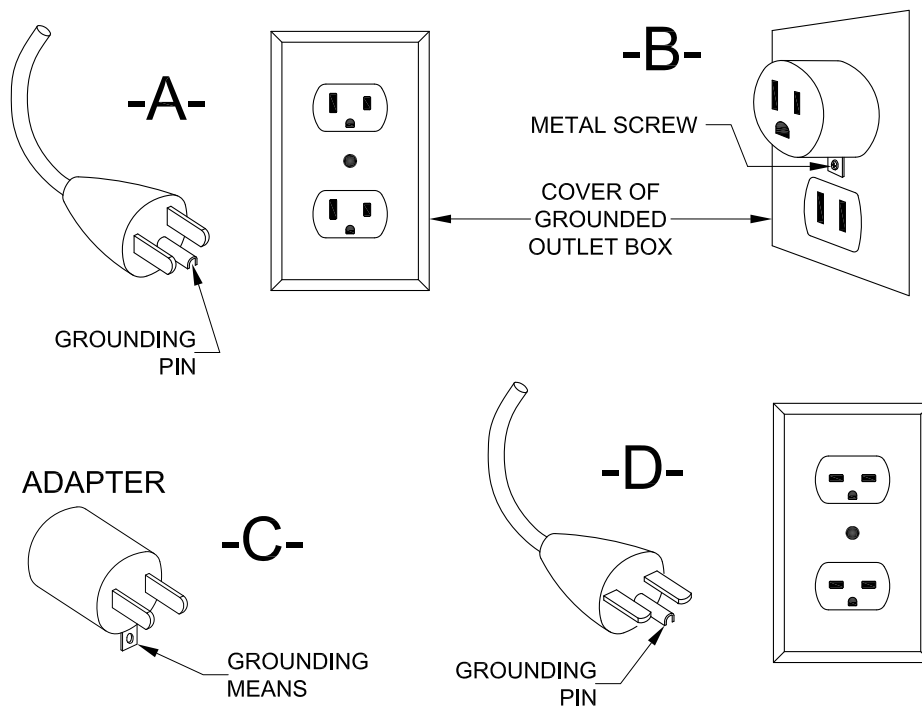
WARNING:

The Power Lab should only be connected to an individual 20A branch circuit.

Safety Instructions

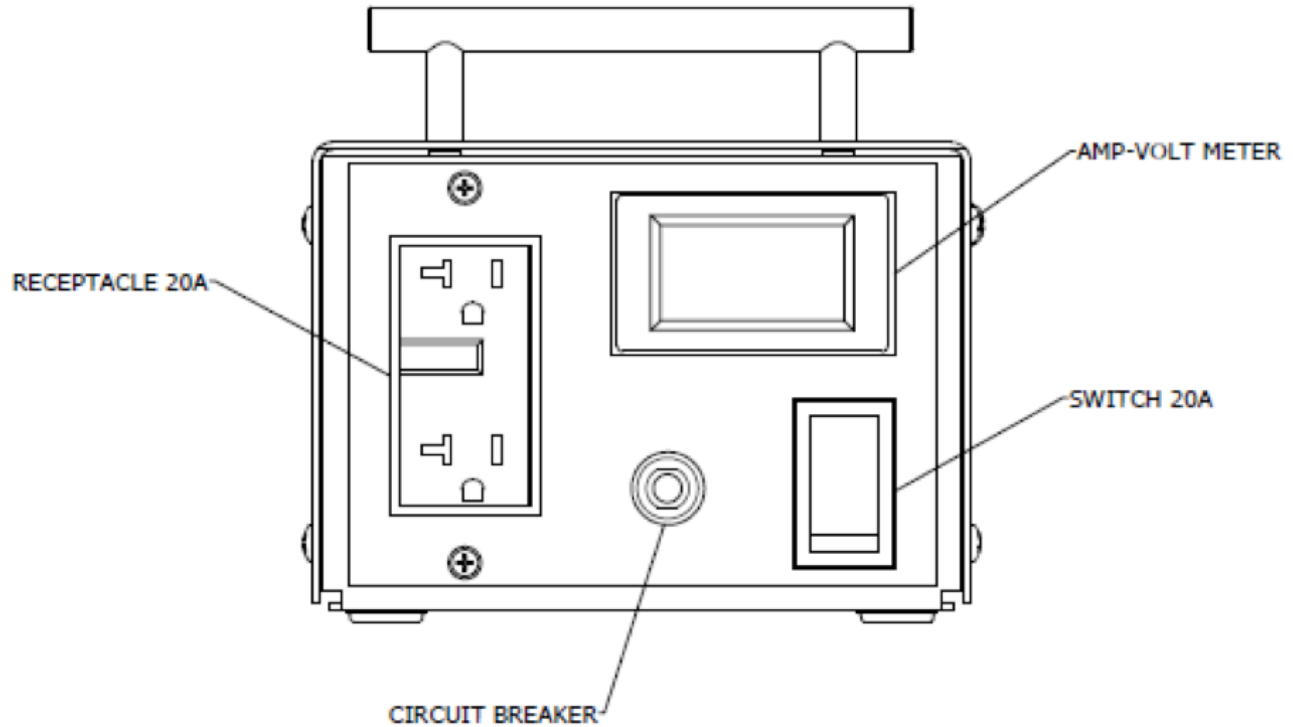
This device shall be grounded while in use to protect the operator from electrical shock. The device is provided with a three-conductor cord and a three contact grounding attachment plug to fit the proper grounding type receptacle. The green (or green and yellow) conductor in the cord is the grounding wire. Never connect this wire to other than the grounding pin of the attachment plug.

This device is for use on a nominal 120 volt circuit and has a grounding plug that resembles the plug illustrated as (A) in the sketch. Make sure that the device is connected to an outlet having the same configuration as the plug. No adapter should be used with this device.



Instructions For Use

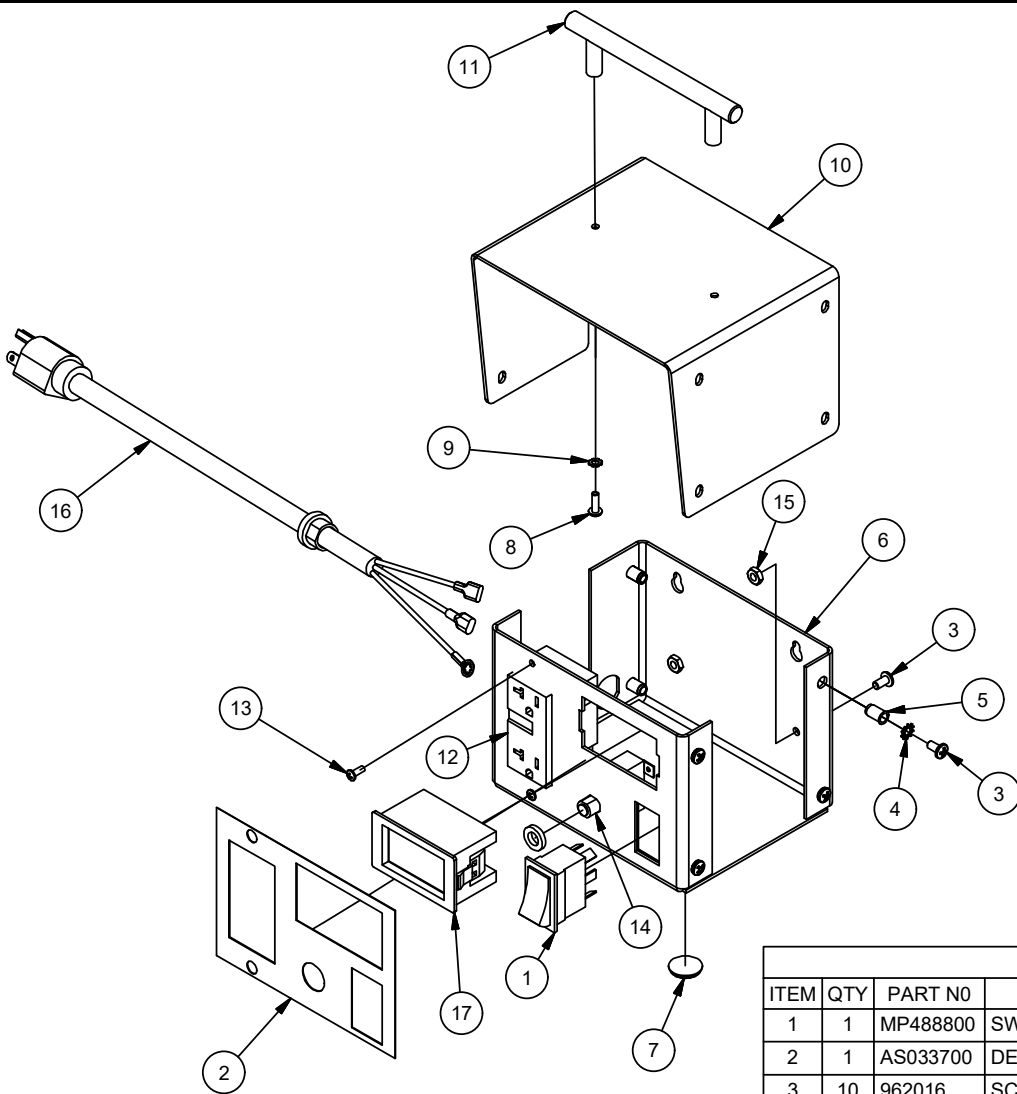
1. Plug Power Lab 120 into 120V, 20A receptacle.
2. Turn the device on by actuating the rocker switch into the "ON" position.
3. The Amp/Volt meter should now be illuminated.
4. Plug machine to be tested into the GFCI receptacle on the Power Lab 120.
5. As the machine is used, the Amp/Volt meter will display the Voltage and the Amperage being used by the machine.



Troubleshooting

Problem	Possible Cause	Remedy
Amp/Volt meter does not illuminate	GFCI has tripped	Push the "Reset" Button on GFCI receptacle.
	20A Breaker has tripped	Push to reset the 20A breaker
	Power Switch is Off	Actuate the power switch into the "ON" position
	No voltage from power cord	Ensure that the Power Lab is plugged into a working receptacle.

Power Lab 120 Assembly



PARTS LIST

ITEM	QTY	PART NO	DESCRIPTION
1	1	MP488800	SWITCH, ROCKER, DPST, 20A
2	1	AS033700	DECAL, POWERLAB 120, FRONT PANEL
3	10	962016	SCREW, 10-24 X 1/2 RD ST MACH
4	8	980603	WASHER, LK 10 EXT TOOTH PLTD
5	8	NB009700	INSERT, 10-24, COMPRESSION TYPE
6	1	AS026300	BASE, POWERLAB 120
7	4	AS025200	FEET, RUBBER, .81" OD, .12" H, BLACK
8	2	962027	SCREW, PHILLIPS PAN HD, #8-32 X 1/2
9	2	87200A	WASHER, LOCK, 8 INT TOOTH
10	1	AS026400	COVER, POWERLAB 120
11	1	AS027000	HANDLE
12	1	AS026500	GFCI RECEPTACLE 20A
13	2	85313C	SCREW, PAN HD, #6-32 X 3/8, PHILLIPS
14	1	41410A	BREAKER, CIRCUIT
15	2	920200	NUT, HEX, 10-24 PLTD
16	1	AS032900	CORD, POWER
17	1	AS030300	AMP-VOLT COMBO METER
18	1	SN013000	TAG, SERIAL, POWERLAB 120
19	1	AS033400	WIRE, JUMPER, BLK (NOT SHOWN)
20	1	AS033300	WIRE, JUMPER, SW BLK (NOT SHOWN)
21	1	AS033200	WIRE, JUMPER, WHT (NOT SHOWN)
22	1	AS033500	WIRE, JUMPER, GRN (NOT SHOWN)
23	1	AS033000	WIRE, JUMPER, WHT (NOT SHOWN)
24	1	AS033100	WIRE, JUMPER, BLK (NOT SHOWN)

Power Lab 120

Parts Manual

Notes:

Pioneer
Eclipse
An **AMANO** Company



Amano Pioneer Eclipse Corporation

1 Eclipse Rd ● PO Box 909
Sparta, North Carolina 28675 ● USA
www.pioneereclipse.com

+1-336-372-8080
1-800-367-3550
Fax 1-336-372-2913