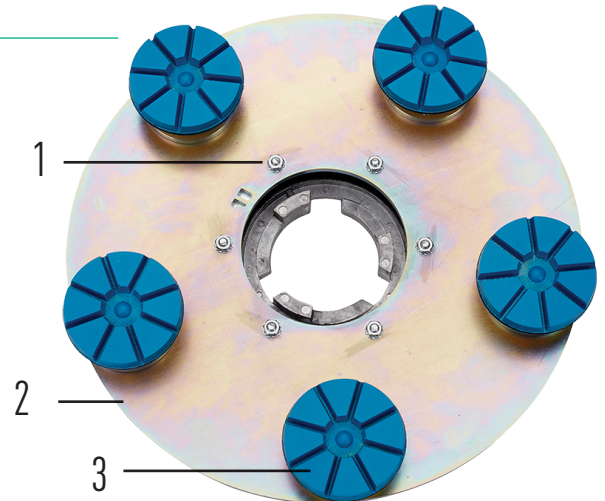


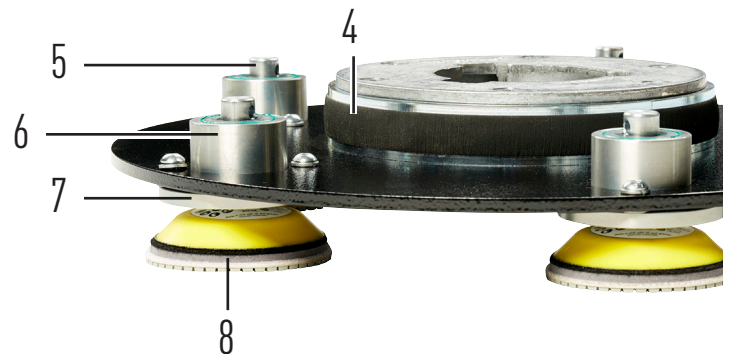
# HydraShine™

The HydraShine is a cost effective solution for polishing small areas and edges.

1. Strong, six-bolt clutch plate construction transfers torque without the use of a plastic coupling.
2. Heavy gauge steel plate for durability and aggressiveness.
3. Quick diamond replacement with hook and loop attachment.
4. Isolator/dampener provides superior handling.
5. The raised bearing shaft allows for quick, wrench free, pad removal.
6. Double seals to keep concrete out of the bearings.
7. Double bearings to ensure smooth rotation.
8. Backer pads provide smoother polishing, but may be removed to increase aggressiveness.



## HYDRA SHINE



# HYDRA SHINE

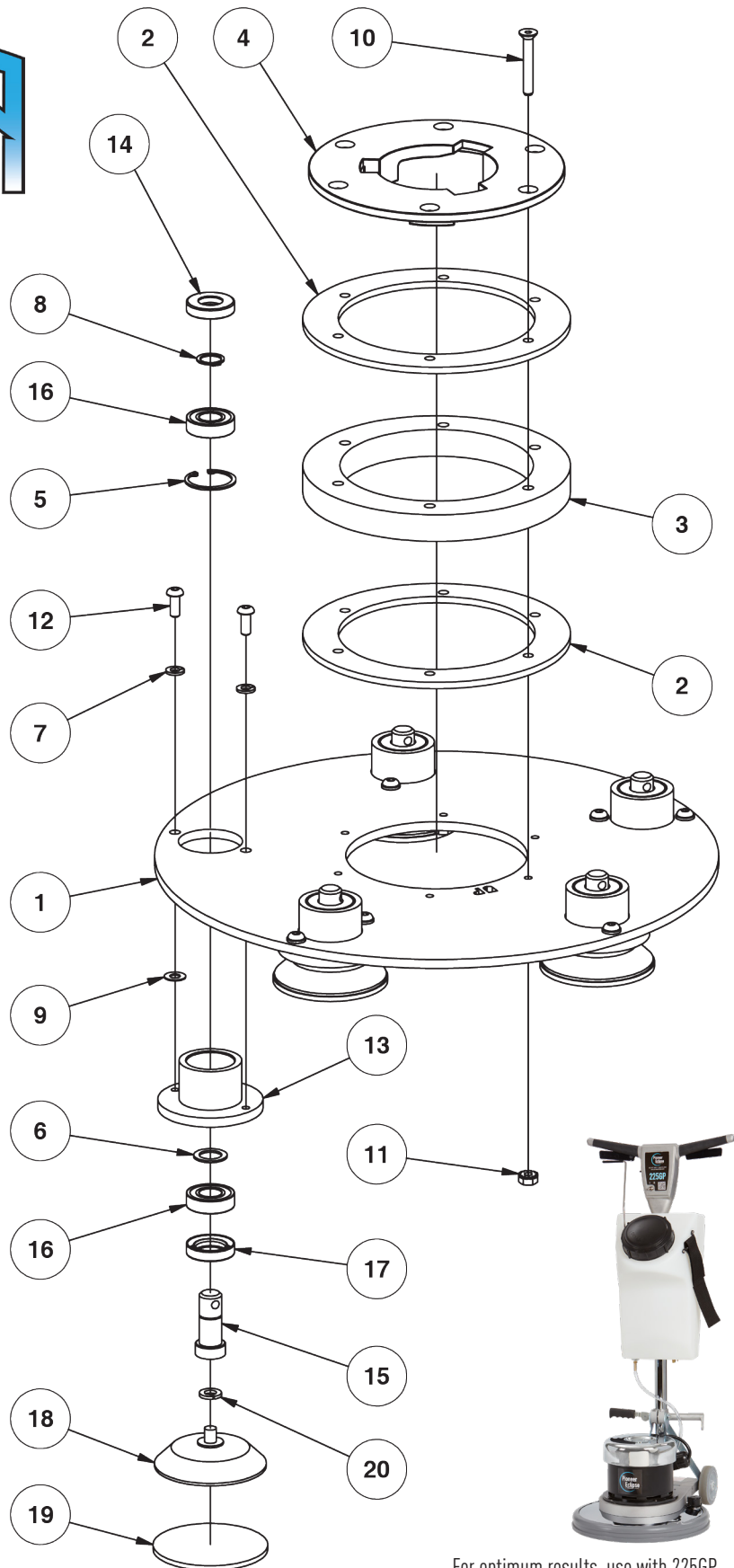
## PARTS LIST

Item	QTY	Part #	Description
1	1	MP497500	PLATE, DRIVER
2	2	AS004700	RING, SPACER
3	1	AS004800	RING, ISOLATOR
4	1	AS004600	PLATE, CLUTCH, DRIVER
5	5	747304	RING, RETAINING, INT.
6	5	61355A	SPACER
7	10	NB6110	WASHER, LOCK, 1/4"
8	5	NB070200	RING, RETAINING, EXT
9	5	NB071400	WASHER, GROUND, 1/4"
10	6	NB071300	SCREW, CS, 1/4" X 2"
11	6	NB9845	NUT, KEPS, 1/4-20
12	10	962822	SCREW, BH, 1/4" X 5/8"
13	5	MP497600	HOUSING, BEARING
14	5	MP497300	SEAL, SHAFT, 15MM
15	5	MP497700	SHAFT
16	10	56380282	BEARING, BALL
17	5	MP497400	SEAL, SHAFT, 20MM
18	5	MP497201	PAD, FOAM, 3" DRIVER
19	5	MP498100	ADAPTER, FOAM, 3"
20	5	NB6111	WASHER, LOCK, 5/16"

## TECHNICAL DATA

Part #	SA031900
Driver Size	16" (406 mm)
Diamond Size	3" (76 mm)
Weight	18 lbs (8 kg)
Warranty	Parts & Labor - 6 months*

\* Excludes consumable wear items



For optimum results, use with 225GP