

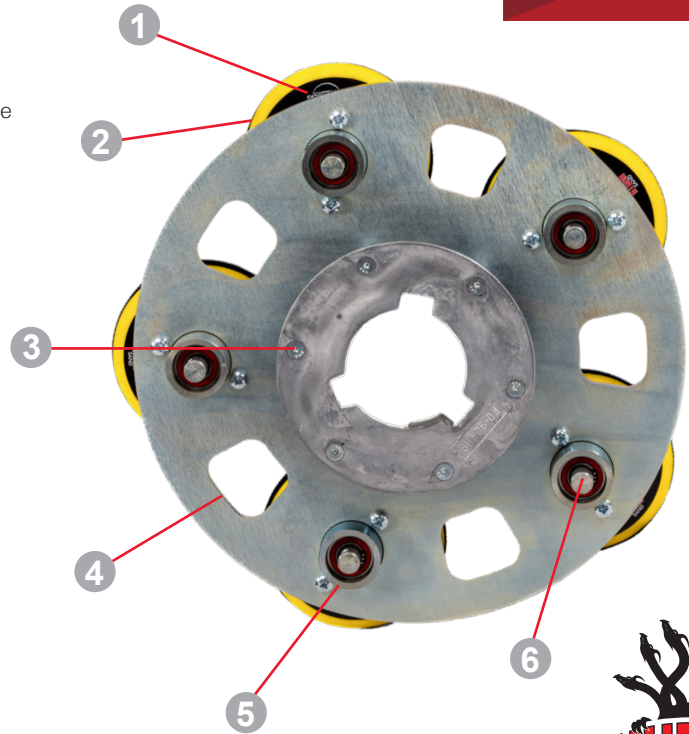


# HYDRASAND 5 Multi Head Sanding Disc

- 1 Five 5" drive pads.
- 2 Backer pads provide smoother sanding, but may be removed to increase aggressiveness.
- 3 Strong, six-bolt clutch plate construction transfers torque without the use of plastic gear assembly.
- 4 Large air slots allow for premium dust collection.
- 5 Steel encased bearings for added strength and performance.
- 6 The raised bearing shaft allows for quick, wrench free, pad removal.

## PRODUCT DESCRIPTION

The HydraSand 5 attachment mounts to any rotary sander and utilizes five 5" pads mounted to a thick steel plate. The five sanding pads provide maximum sanding performance and longer runs between abrasive changes. Sealed double bearings provide stability and durability in dusty environments. HydraSand 5 is 15% more productive than leading competitive units.



## RECOMMENDED PRODUCTS



The HydraSand 5 attachment mounts to any standard rotary sander. There is no need to purchase a special machine to use the HydraSand 5.

## TECHNICAL DATA

**Pad Size** 5"

**Driver Construction** Steel

**Weight** 12 lb (5.4 kg)

**Warranty** Parts & Labor - 6 months\*  
\*Excludes consumable wear items

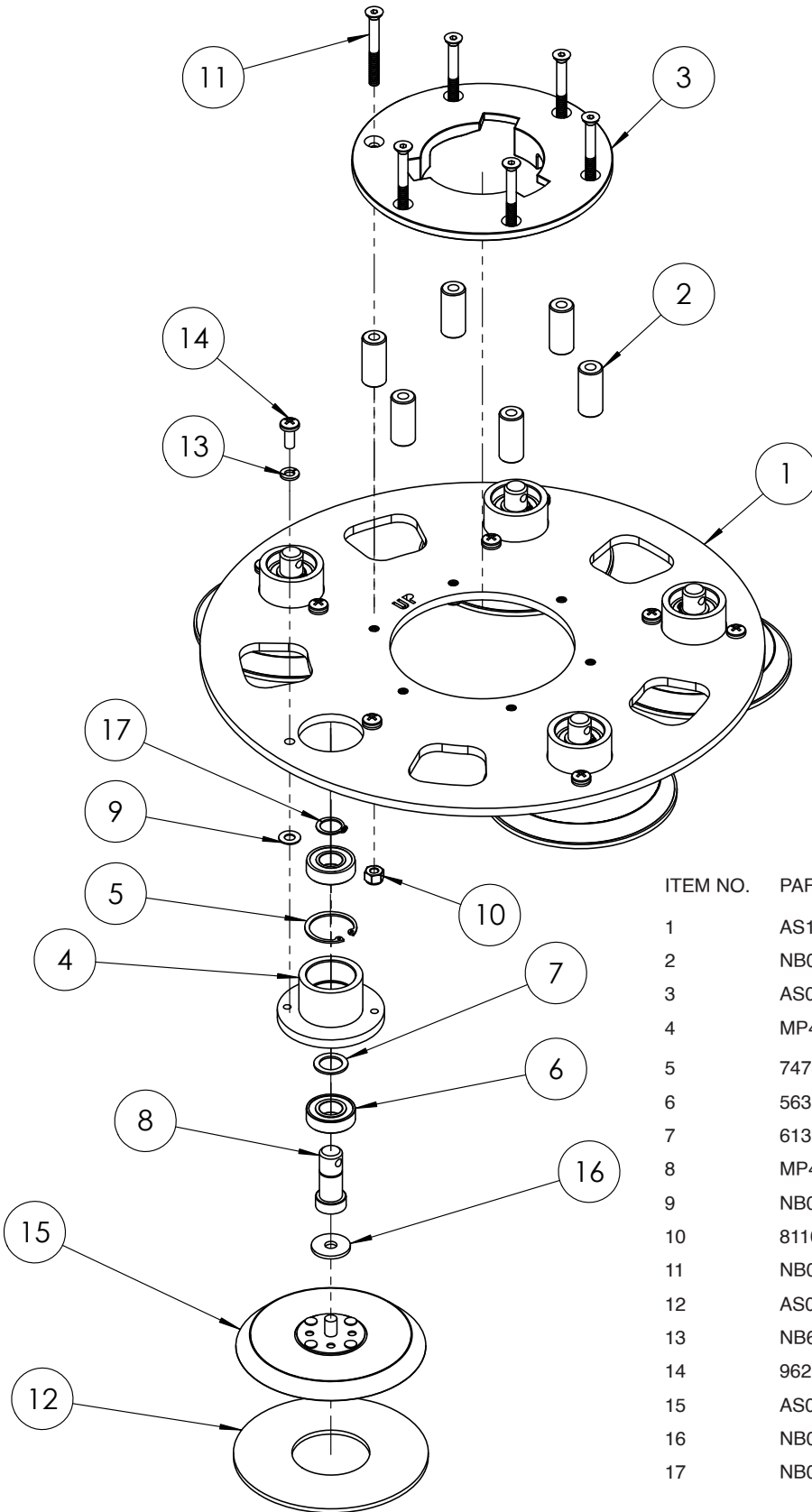
Specifications are subject to change without notice.

## AVAILABLE MODELS

SA039700 - HydraSand 5



# 16" HYDRASAND 5 ASSEMBLY



ITEM NO.	PART NUMBER	DESCRIPTION	QTY.
1	AS132800	PLATE, DRIVER, 1/4"	1
2	NB086000	SPACER, .63 OD X .28 ID X 1.38	6
3	AS004600	PLATE, CLUTCH, DRIVER	1
4	MP497600	HOUSING, BEARING, POLISHING HEAD	5
5	747304	RING RETAIN ARM BRG 37	5
6	56380282	BEARING-BALL 6002 CUSTOM	10
7	61355A	SPACER, CASTER WHEEL	5
8	MP497700	SHAFT, POLISHING HEAD	5
9	NB071400	WASHER, GROUND, 1/4 ID X 9/16	5
10	81102A	NUT, NYLOCK, 1/4-20	6
11	NB074900	SCREW, FHSCS, 1/4-20 X 2 1/4	6
12	AS003500	PAD, BACKER, FOAM, 5"	5
13	NB6110	WASHER, LOCK, 1/4"	10
14	962983	SCR 1/4 -20X 5/8 PN ST MACH	10
15	AS003400	PAD, DRIVER, 5", ASM.	5
16	NB080100	WASHER, .312 X 1 X .0840-.0960	5
17	NB070200	RING, RETAINING, EXT	5