



# HYDRASAND 20

## Multi Head Sanding Disc

With **Dual Diameter Abrasion** Technology

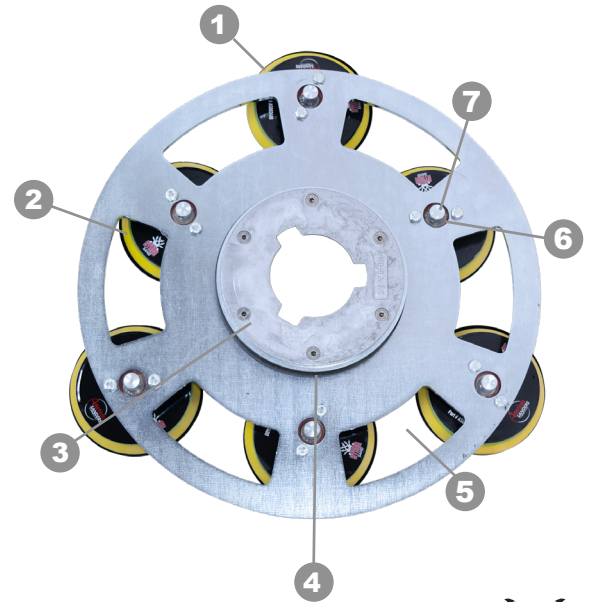
### PRODUCT DESCRIPTION

The HydraSand 20 incorporates a Dual Diameter Abrasion (DDA) head that improves sanding performance while reducing amp draw at the same time. This patent pending DDA technology ensures maximum sanding performance and allows longer runs between abrasive changes.

#### Dual Diameter Abrasion:

- Outer pads rotate clockwise for initial scratch pattern.
- Inner pads rotate counter-clockwise for secondary scratch pattern.
- Compared to traditional 20" planetary head:
  - 32% less amp draw.
  - 14% more aggressive cut.

- 1 Six 5" drive pads mounted to a 1/4" steel plate.
- 2 Backer pads provide smoother sanding, but may be removed to increase aggressiveness.
- 3 Strong, six-bolt clutch plate construction transfers torque without the use of plastic gear assembly.
- 4 Isolator/dampener provides superior handling.
- 5 Large air slots allow for premium dust collection.
- 6 Steel-encased bearings for added strength and performance.
- 7 The raised bearing shaft allows for quick, wrench-free, pad removal.



### RECOMMENDED PRODUCTS



Used on high speed with the HydraSand 20, the **Epoch HD-20** acts as a planetary sander, abrading and flattening floors. Removable weights allow for various levels of aggressiveness.

### TECHNICAL DATA

**Pad Size** 5"

**Driver Construction** 1/4" Steel

**Driver Size** 20"

**Weight** 18.25 lb (8,28 kg)

**Warranty** Parts & Labor - 6 months\*  
\*Excludes consumable wear items

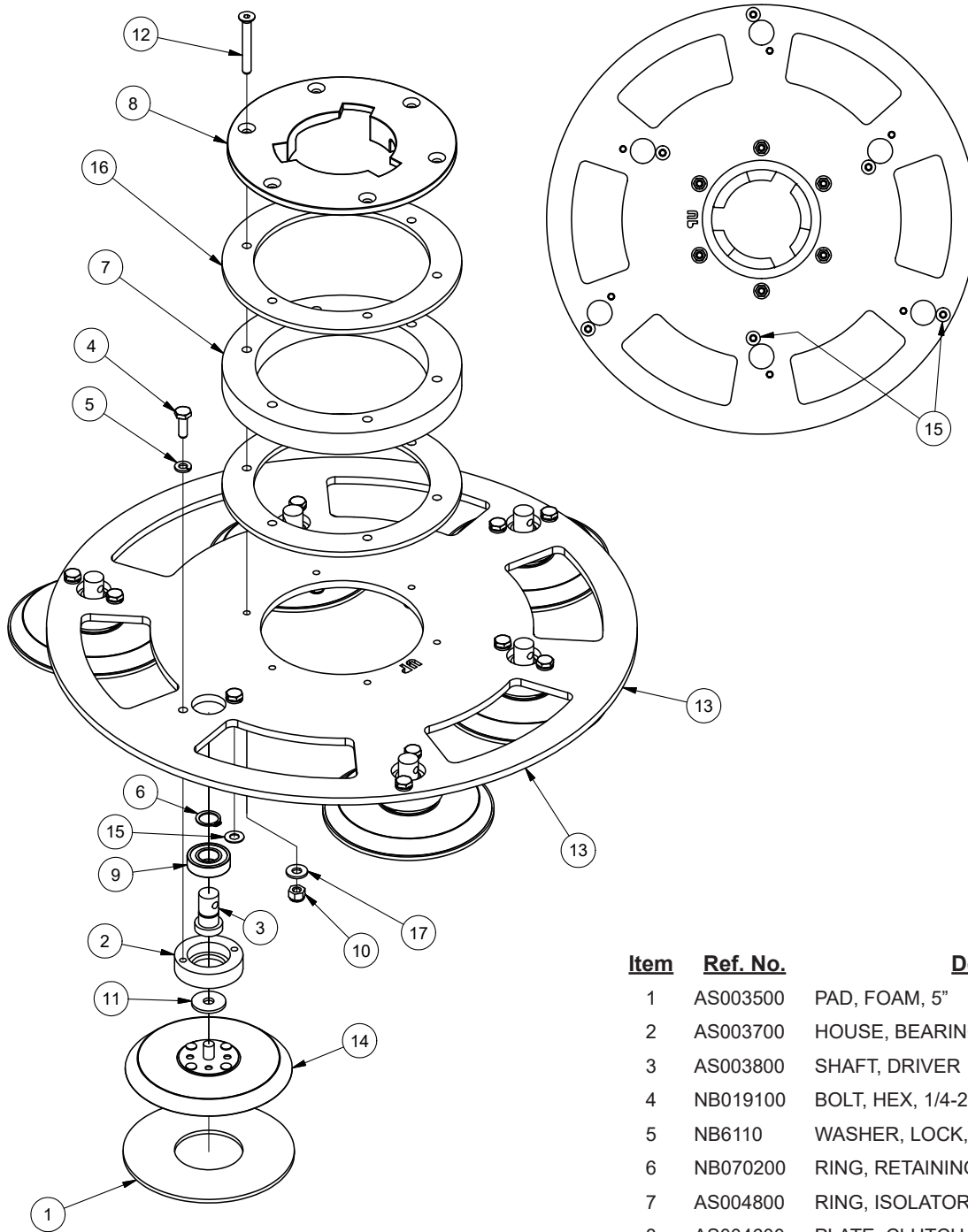
Specifications are subject to change without notice.

### AVAILABLE MODELS

SA035400 - HydraSand 20"



# 20" HYDRASAND ASSEMBLY



<u>Item</u>	<u>Ref. No.</u>	<u>Description</u>	<u>Qty</u>
1	AS003500	PAD, FOAM, 5"	6
2	AS003700	HOUSE, BEARING, DRIVER	6
3	AS003800	SHAFT, DRIVER	6
4	NB019100	BOLT, HEX, 1/4-20 X 3/4,GD 5	12
5	NB6110	WASHER, LOCK, 1/4"	12
6	NB070200	RING, RETAINING, EXT	6
7	AS004800	RING, ISOLATOR	1
8	AS004600	PLATE, CLUTCH, DRIVER	1
9	56380282	BEARING-BALL, 6002 CUSTOM	6
10	NB3275	NUT, LOCK, 1/4"	6
11	NB080100	WASHER, .312X 1X 0.840-.0960	6
12	NB055400	SCREW, SOCKET, FLAT, CS, 1/4-20 x 2", SS	6
13	AS036800	PLATE, DRIVE, 20" HYDRA SAND	1
14	AS003400	PAD, DRIVER, 5", ASM.	6
15	NB071400	WASHER, GROUND, 1/4"	6
16	AS004700	RING, SPACER	2
17	NB3350	WASHER, FLAT, 1/4", CZ	6