

Phoenix

230V Planetary / Rotary Sander

Operator's Manual

READ THIS BOOK

This book has important information for the use and safe operation of this machine. Failure to read this book prior to operating or attempting any service or maintenance procedure to your American Sanders machine could result in injury to you or to other personnel; damage to the machine or to other property could occur as well. You must have training in the operation of this machine before using it. If your operator(s) cannot read this manual, have it explained fully before attempting to operate this machine.

All directions given in this book are as seen from the operator's position at the rear of the machine.

EN

Contents

Operator Safety Instructions	2-3
Machine Introduction	4
230V Electrical Connection Instructions	4
Operator Responsibility	5
Machine Preparation	5-6
Operating Instructions	7-8
Sanding Cuts & Sandpaper	8
Maintenance	8-9

SECTION II - Parts and Service Manual

Notes	10
Wiring Diagram	11
Main Assembly	12
Frame Assembly	14
Handle Assembly	15
Upper & Lower Handle Assemblies	17
Planetary Shroud Assembly	19
Planetary Driver Assembly	20
Modular Head Options	21-22
Dolly Assembly	23
Motor	24
Motor Assembly	25
Warranty	27

WARNING!

The Products sold with this Manual contain or may contain chemicals that are known to certain governments (such as the State of California, as identified in its Proposition 65 Regulatory Warning Law) to cause cancer, birth defects or other reproductive harm. In certain locations (including the State of California) purchasers of these Products that place them in service at an employment job site or a publicly accessible space are required by regulation to make certain notices, warnings or disclosures regarding the chemicals that are or may be contained in the Products at or about such work sites. It is the purchaser's responsibility to know the content of, and to comply with, any laws and regulations relating to the use of these Products in such environments. The Manufacturer disclaims any responsibility to advise purchasers of any specific requirements that may be applicable to the use of the Products in such environments.

This product is intended for commercial use only

Operator Safety Instructions

In this Operation Manual you will find three statements that you must read and observe to ensure safe operation of this machine.



DANGER! means: Severe bodily injury or death can occur to you or other personnel if the **DANGER** statements found on this machine or in this Operation Manual are ignored or are not adhered to. Read and observe all **DANGER** statements found in this Operation Manual and on your machine.



WARNING! means: Injury can occur to you or to other personnel if the **WARNING** statements found on your machine or in the Operation Manual are ignored or are not adhered to. Read and observe all **WARNING** statements found in this Operation Manual and on your machine.



CAUTION! means: Damage can occur to the machine or to other property if the **CAUTION** statements found on your machine or in this Operation Manual are ignored or are not adhered to. Read and observe all **CAUTION** statements found in this Operation Manual and on your machine.

**DANGER!**

Failure to read the Owner's Manual prior to operating or servicing your American Sanders machine could result in injury to you or to other personnel; damage to the machine or to other property could occur as well. You must have training in the operation of this machine before using it. If you or your operator(s) cannot read English, have this manual explained fully before attempting to operate this machine.

**DANGER!**

A. Sanding/finishing wood floors can create an explosive or combustible environment. Do not operate this machine around solvents, thinners, alcohol, fuels, floor finishes, wood dust or any other flammable materials. Cigarette lighters, pilot lights, electrical sparks and all other sources of ignition should be extinguished or avoided. Keep work area well ventilated.

B. Dust generated from sanding wood floors can spontaneously ignite or explode. Promptly dispose of any sanding dust in a metal container clear of any combustibles. Do not dispose in a fire.

**DANGER!**

A. Electrocutation could occur if the machine is being serviced while the machine is connected to a power source. Disconnect the power supply before servicing.

B. Electrocutation or fire could occur if the machine is being operated with a damaged power cord. Keep the power cord clear of the pad. Always lift the cord over the machine. Do not move the machine by the power cord.

C. Shock hazard. Do not use the machine if it has been rained on or sprayed with water.

**DANGER!**

To avoid injury keep hands, feet, and loose clothing away from all moving parts on the machine. Disconnect the power cord before replacing the pad, changing the abrasive, or when servicing. Do not operate the machine unless all guards are in place. Never leave the machine unattended while connected to a power source.

**DANGER!**

Machine can have high starting torque. Do not operate machine on rough or uneven surfaces. Do not operate on a slope. It is possible for the machine to move suddenly from side to side and even leave the ground if misused during operation. Only experienced operators should use machine for applications that impart high torque on the machine. If unable to control the machine during operation, release the handle and step away from the machine. It will stop automatically.

**WARNING!**

Injury can occur if protective clothing or equipment is not used while sanding. Always wear safety goggles, protective clothing, and dust mask while sanding.

**WARNING!**

This sander is not to be used on pressure treated wood. Some pressure treated woods contain arsenic and sanding pressure treated wood produces hazardous dust. Inhaling hazardous dust from pressure treated wood can cause serious injury or death. Sanding pressure treated wood decks or uneven surfaces can damage the sander which is not covered under warranty or damage waiver.

**WARNING!**

Any alterations or modifications of this machine could result in damage to the machine or injury to the operator or other bystanders. Alterations or modifications not authorized by the manufacturer voids any and all warranties and liabilities.

**WARNING!**

Risk of explosion. Floor sanding can result in an explosive mixture of fine dust and air. Use floor sanding machine only in a well-ventilated area free from any flame or match.

**WARNING!**

Use of this machine as a step or furniture could result in injury or damage. DO NOT use this machine as a step or furniture. DO NOT ride on this machine.

**WARNING!**

To avoid injury keep hands, feet and loose clothing away from all moving parts of this machine.

**WARNING!**

Injury to operator or bystanders could occur if an abrupt change in floor surface texture is encountered when using this machine. Abrupt change in floor surface texture can cause a sudden pulling motion by this machine. This sudden pulling motion can result in loss of control of the machine which could injure the operator or bystanders. Avoid motions that could cause machine to cross from a smooth floor surface to a carpeted or rough texture floor surface. Avoid motions that could allow the machine to come in contact with low obstacles, such as floor electrical outlets, door stops or entry molding, etc.

**WARNING!**

Do not operate machine without shroud attached.

**CAUTION!**

The machine is heavy. Get assistance before attempting to transport or move it.

Introduction

The Phoenix is a floor sanding machine. It can also be used for polishing, buffing and stripping. The machine can be used on wood, vinyl, terrazzo or cement floors.

CAUTION! Your equipment may be inappropriate on some installations. Always consult with the flooring manufacturer on the proper installation, preparation, and finishing of their product. Determine suitability of your equipment in preparing the product.

Model	Phoenix (07259A)	Phoenix (07259B)
Voltage (Volts)	230	230
Frequency (Hz)	60 HZ	50 HZ
Current (Amps)	12.7	12.7
Power (HP)	3 (2.2kw)	3 (2.2 kw)
Pad Driver Diameter (in)	16 (401mm)	16 (401mm)
Pad Speed (rpm)	175	146
Cord Length (ft)	50 (15.2m)	40 (12.2m)
Weight (pounds)	Machine Only 170lbs (77kg)	Machine Only 170lbs (77kg)

Electrical Connection Instructions (230V)

Instructions for connection to the power supply and the electrical ground.

This product must be grounded. If it should malfunction or breakdown, grounding provides a path of least resistance for electric current to reduce the risk of electrical shock. This product is equipped with a cord having an equipment-grounding conductor and grounding plug. The plug must be inserted into an appropriate outlet that is properly installed and grounded in accordance with all local codes and ordinances.

WARNING! Improper connection of the equipment-grounding conductor can result in a risk of electric shock. Check with qualified electrician or service person if you are in doubt as to whether the outlet is properly grounded. Do not modify the plug provided with the product - if it will not fit the outlet, have a proper outlet installed by a qualified electrician.

This product is for use on a nominal 230 volt circuit and has a grounding attachment plug that looks like the plug illustrated in Fig. A. Make sure that the product is connected to an outlet having the same configuration as the plug. No adaptor should be used with this product.

WARNING! To prevent possible electric shock, protect the machine from rain. Keep the machine in a dry building.

WARNING! To prevent possible electric shock, always use a 3-wire electrical system connected to the electrical ground. Consult your electrical contractor.

WARNING! Do not cut, remove or break the ground pin. If the outlet does not fit the plug, consult your electrical contractor.

WARNING! Have worn, cut or damaged cords replaced by an authorized service person.

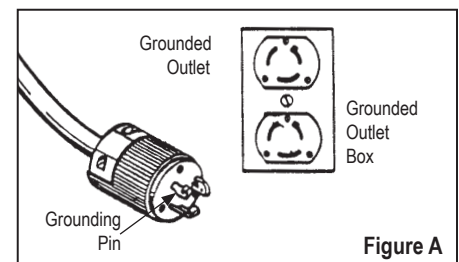


Figure A

Extension Cords (230V)

Use only an approved extension cord with two main conductors and one earthing conductor.

WARNING! If you use an extension cord, use an extension cord with minimum wire size 10 AWG. Do not use an extension cord longer than 50 ft. Do not join two extension cords.

WARNING! Do not cut, remove, or break the ground terminal. Do not try to fit a three-terminal plug into a receptacle or connector body that does not fit the plug. If the receptacle or connector body does not fit the plug, see your Authorized person to make the connection.

Operator Responsibility

The operator is responsible for performing the recommended daily maintenance and checkups of the machine to keep it in good working condition. The operator must inform the service mechanic or supervisor when recommended maintenance procedures are required as prescribed in the "MAINTENANCE" section of this manual.

FOR SAFETY: DO NOT operate machine before reading and understanding the operation manual.

Keep your machine regularly maintained by following the maintenance information in this manual. Only use genuine American Sanders parts. Use the parts illustration section of your manual when ordering parts. During and after operation, perform the recommended daily and hourly procedures outlined in the Maintenance Chart.

Machine Preparation

Unpacking the Machine

When the machine is delivered, carefully inspect the shipping carton and the machine for damage. Unpack the machine with caution. If damage is evident, save the shipping carton so that it can be inspected. Contact the American Sanders Customer Service Department.

Adjusting the Handle

1. Loosen the handle adjustment lever on the right side of the handle. (Fig. B)
2. Position operator handle to desired location, (there is a detent at the vertical position), and tighten handle adjustment lever. (Fig. C)

Transporting the Machine

1. Unplug the machine from the wall and wrap cord around the handle and cord hook.
2. Raise and lock the handle in the upright position. To lock the handle, push down on the handle release lever. (Fig. D)
3. Push forward on the operator handle so that the back of the machine is lifted up off of the floor. (Fig. E)
4. Aligning the four slots with the four lugs, secure the transport dolly to the frame. (Fig. F)
5. Pull back on the handle and maneuver the machine on the transport dolly tires.
6. To pick up the machine, use two people. One person grasping the operator handle and one person grasping the motor handle. (Fig. G)

⚠ WARNING! The machine is heavy, 170 lbs (77 kg) without the cord. To avoid injury or damage to the machine use a firm grip and proper lifting technique. Always use two people when lifting this machine.

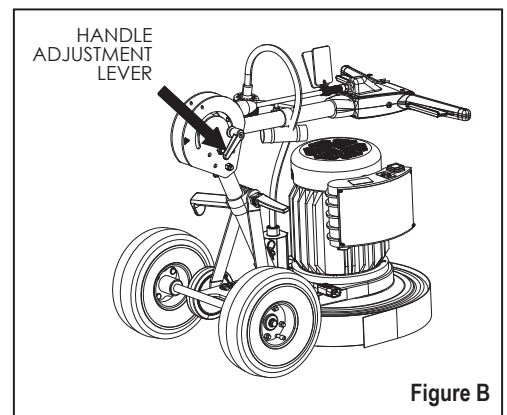


Figure B

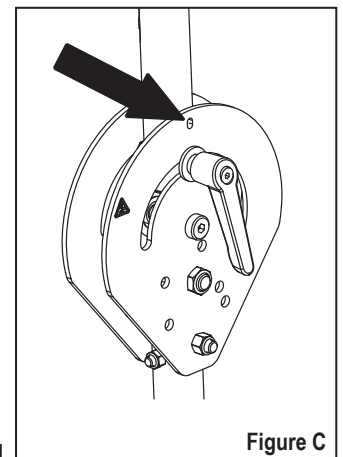


Figure C

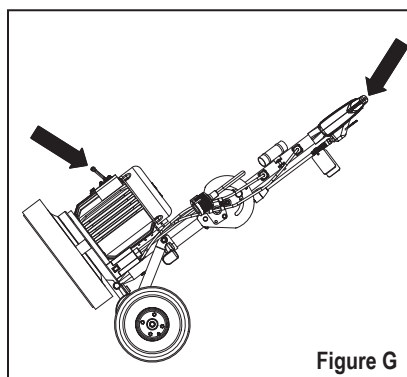


Figure G

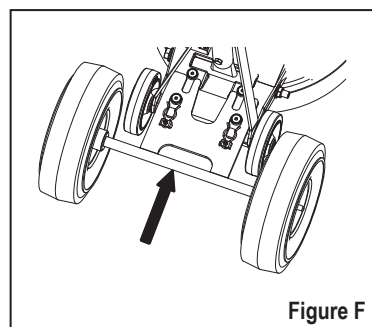


Figure F

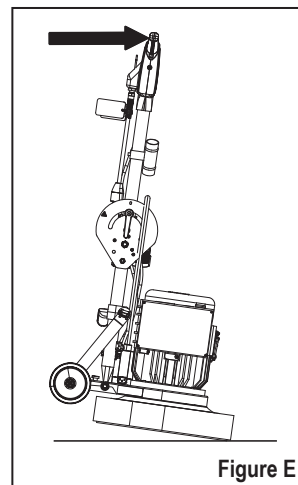


Figure E

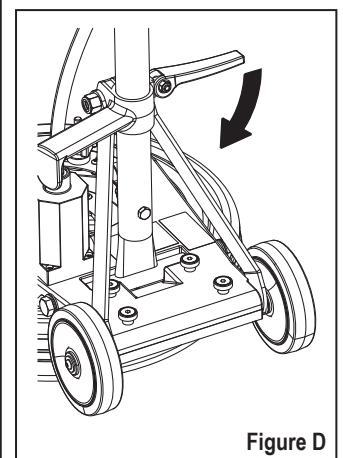


Figure D

Machine Preparation (Cont.)

Operator Handle Grips

Use the operator handle grips to operate and move the machine. The switch levers on the underside of the handle grips turn the motor on and off. Lower the handle to locate the handle grips in a comfortable operating position. Lock the handle release lever in place. While operating the machine, slightly raising or lowering the operator's handle will help the operator control the machine.

Switch Levers

The switch levers activate the switch module to turn the motor on and off. The switch module will not activate unless the switch lever safety lock is pressed first. To operate the machine, only one switch lever has to be engaged. This allows the operator to alternate hands while using the machine. To stop the motor from turning, release the switch levers.

Switch Lever Safety Lock

The switch lever safety lock is designed to prevent someone from accidentally turning the machine on. Before turning the machine on, always make sure the handle is in the desired operating position and the handle release lever is locked. Push and hold the switch lever safety lock with one hand while engaging one of the switch levers. Once the machine has started, the switch lever safety lock can be released.

Handle Release Lever

This handle is used to release or lock the operator's handle. Pulling up on the lever will allow the handle to move freely. Pushing down on the lever, horizontally, will lock the handle in place. The handle should always be locked while in use, as well as during transport or storage.

Cord Hook

To prevent the cord from being damaged while not in use, wrap the cord around the cord hook and the top of the operator's handle.

Power Cord

Use only the supplied power cord with this machine. The power cord is sized to be used with this machine. To attach the power cord to the machine, insert plug on the back of handle into the female receptacle of the power cord. Properly align the plug pins with the holes of the receptacle, push together and twist to lock the cords together.

Handle Adjustment Lever

With the Planetary Driver installed, the machine can be operated with the handle in various orientations. The top half of the operator handle can pivot nearly 180°. By loosening the handle adjustment lever, the operator handle can be pivoted to the desired angle. Once the position is achieved, the handle adjustment lever needs to be tightened. The handle adjustment lever should always be locked while in use, as well as during transport or storage.

Light

The LED light can be positioned to assist the operator in viewing the floor. The light has a power switch on the side of the base.

Hour Meter

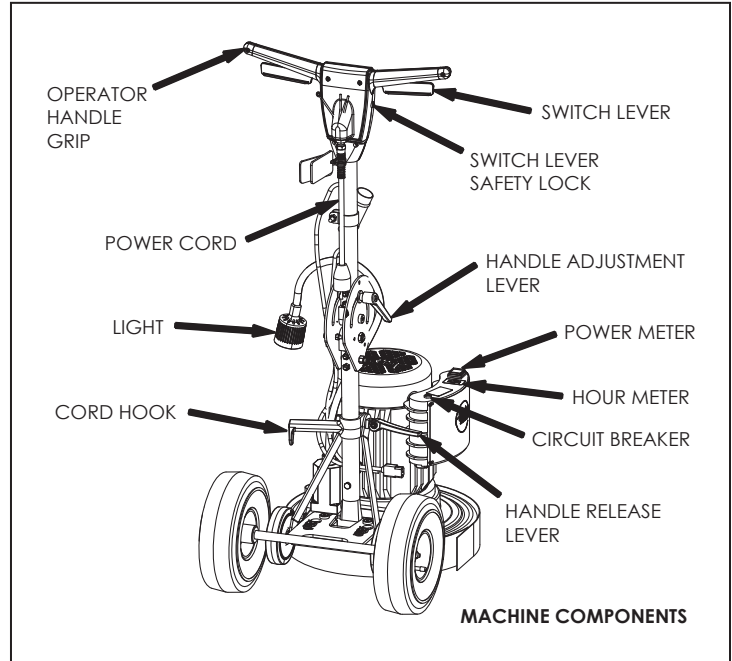
The hour meter records the hours of operation. It can be used to plan scheduled maintenance and track job usage.

Power Meter

The power meter displays both voltage and amperage at the machine. The motor is rated to operate between 208V and 253V. The maximum continuous allowable amp draw is 12.7 amps.

Circuit Breaker

The circuit breaker provides protection from electrical shorts and over-current conditions. If the breaker is tripped, depress the center button.



How to Operate the Machine

Shroud Removal and Attachment

To Remove: Place the handle in the upright (vertical) position and lock the handle release lever. Tilt the machine back on the small transport wheels and let the handle rest on the floor. With the driver attachment removed, lift up on the retention tab, turn the shroud counter-clockwise and pull away from the machine. (Fig. H)

To Attach: Line up the four slots in the shroud with the lugs in the frame. (Note the dust tube location, if equipped.) Turn the shroud clockwise to attach. (Fig. H)

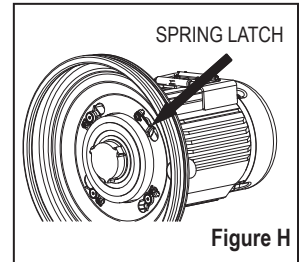


Figure H

Installing non-Planetary Drivers

Place the handle in the upright (vertical) position and lock the handle release lever. Tilt the machine back on the small transport wheels and let the handle rest on the floor. Align the lugs of the gearbox with the corresponding slots in the driver and turn the driver counterclockwise to lock it in place. (Fig. I) To remove driver, give it a quick hard turn clockwise.

⚠ CAUTION! Using the wrong pad, brush, or tooling on this machine can overload the motor.

Installing the Planetary Driver

Place the handle in the upright (vertical) position and lock the handle release lever. Tilt the machine back on the small transport wheels and let the handle rest on the floor.

With the planetary shroud attached to the machine, align the lugs of the gearbox with the slots of the planetary driver. Additionally, align the teeth of the ring gear in the shroud with the teeth of the planet gears of the driver. (You may have to slightly turn planet gears for the teeth to mesh.) Once engaged, turn the driver counter-clockwise to lock it in place. (Fig. J)

Note: To ease removal, use a large, straight screwdriver to wedge between the gearbox lugs and the slots of the planetary driver.

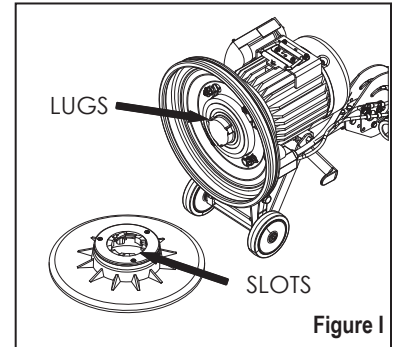


Figure I

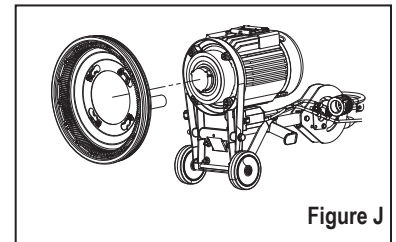


Figure J

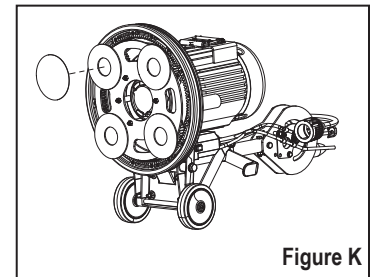


Figure K

Installing Sand Paper

1. Put the handle in the vertical position.
2. Lock the handle.
3. Tilt the machine backward until the handle is on the floor.
4. The Planetary Driver utilizes hook and loop style sanding paper. Pull the spent abrasive off of the pad hook.
5. Replace with new sanding abrasive. (Fig. K)

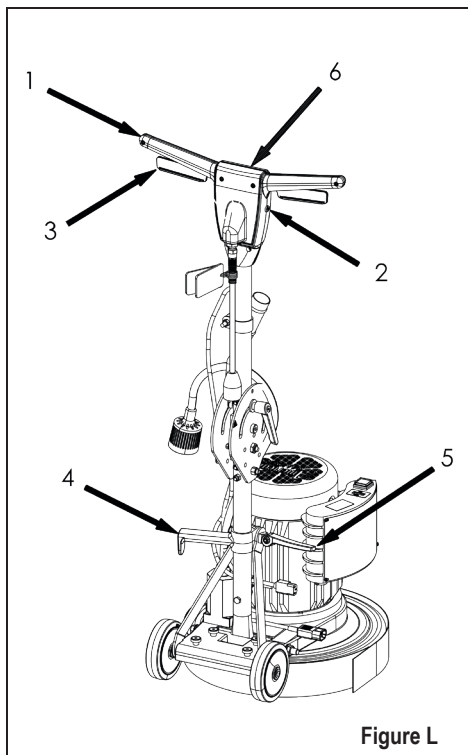


Figure L

Operation (Fig. L)

1. Unwrap the power cord from the cord hook (4) and plug it into the properly grounded outlet.
2. Pull up on the handle release lever (5). Move the operator handle (6) downward until your arms are almost straight. Push down on the handle release lever (5) to lock it in place.
3. Lift up on the operator handle (6) until the driver is flat against the floor.

⚠ DANGER! Machine can have high starting torque. Do not operate machine on rough or uneven surfaces. Do not operate on a slope. It is possible for the machine to move suddenly from side to side and even leave the ground if misused during operation. Only experienced operators should use machine for applications that impart high torque on the machine. If unable to control the machine during operation, release the handle and step away from the machine. It will stop automatically.

⚠ WARNING! Be prepared to control the machine as soon as the motor starts. Just a slight up or down movement of the operator handle (6) will make the machine move from side to side. Raise the handle to go right. Lower the handle to go left.

⚠ CAUTION! Immediately start moving the machine back and forth. Keep the machine moving while the motor is running to avoid damage to the floor.

How to Operate the Machine (Cont.)

4. Hold one of the operator handle grips (1) firmly, push the switch lever safety lock (2) and the compress the switch lever (3) to start the motor.

Note: When the switch levers (3) are released, the machine shuts off immediately.

Note: Inexperienced users should practice operating the machine prior to beginning their project. Practice in a large open area where the floor is smooth, with only a cleaning pad on the machine. The user should practice operating in this manner until they can control the machine consistently.

5. The attached LED light will only operate when the machine is plugged into an outlet. Bend the flexible arm of the lamp to the desired position. Press the "ON" switch at the base of the light. (Fig. M)

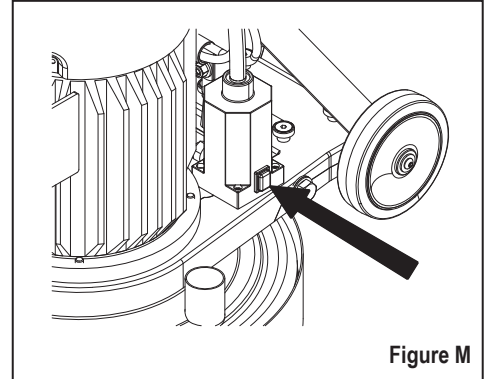


Figure M

Sanding Cuts and Sandpaper

Initial Cut

The purpose of the initial cut is to remove old finish and gross imperfections on the floor surface. A coarse abrasive should be used.

If glazing, loading, or burning takes place immediately into an initial cut, select a coarser abrasive. If this should occur during an initial cut, the abrasive has dulled and must be replaced.

Final Cuts

The purpose of a finishing cut is to remove the scratches produced during the initial cut. Use a fine (60-80 grit) grain abrasive.

If the surface remains rough after a finishing cut, it may be necessary to use an even finer grain of abrasive (80-100 grit). Care should be taken in selecting the grit size of the abrasive. A very fine grain will close the pores on a wood floor making admission of a stain difficult.

Note: Some finer grain abrasives may begin to heat the woods surface and burnish the wood grain.

Maintenance

⚠ WARNING! Maintenance must be done by authorized personnel only.

⚠ CAUTION! Keep all adjustments according to specifications.

Maintenance Instructions

Return the machine to an American Sanders Authorized Service Location every 12 months for maintenance inspections.

⚠ WARNING! All electrical repairs must be done by authorized personnel only. The machine must be tested after electrical repairs to make sure it is safe to operate. Disconnect the electrical plug from the electrical outlet before doing any electrical repairs.

Switches

The start and stop switch has an interlock which prevents the contacts from being closed. If any part of the switch is not operating, replace the part. If any part of the electrical system of the machine is not operating or is damaged, replace the part. Make sure all connections are tight. Return the machine to the American Sanders Service Branch or a American Sanders Authorized Service Center for electrical repairs or testing.

Maintenance Of The Motor

If repairs to the gear unit or motor are needed, do not disassemble the gears and motor. Return the machine to the nearest American Sanders Service Branch or American Sanders Authorized Service Center.

For safe operation, and longer life to your American Sanders product, use only American Sanders parts.

Note: The grease (503802) for the gear box needs to be changed every year. The Phoenix requires 8 oz. of grease.

Maintenance

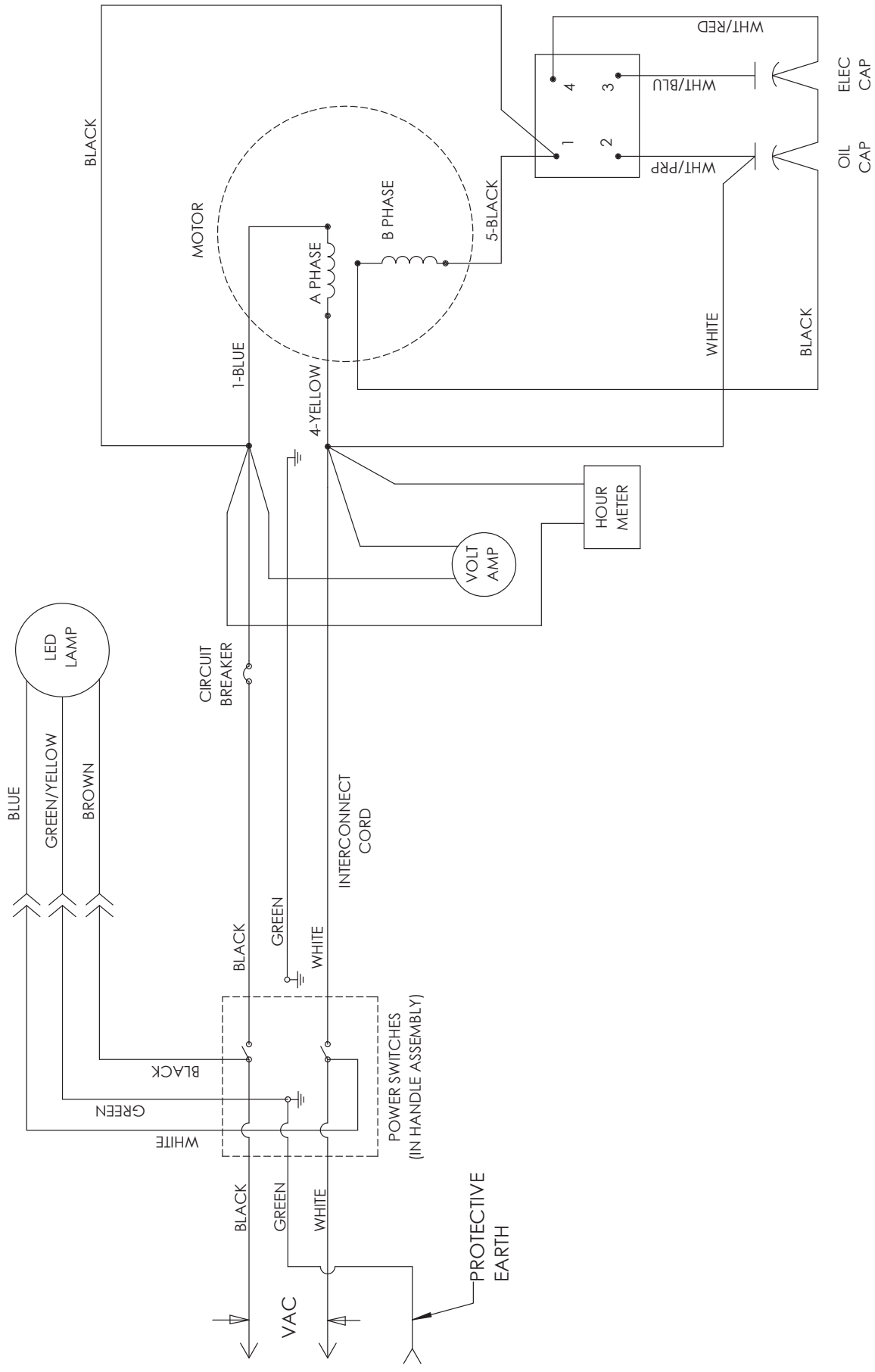
Problem	Possible Cause	Solution
Machine will not start	No power	Check the main power supply (building circuit breaker).
		Check the cord connection at the wall outlet
	Switch lever safety lock not depressed	Hold in the switch lever safety lock and then engage switch levers.
	Bad connection	Check the motor and cord interlock connections.
	Defective start capacitor.	Contact an authorized American Sanders Dealer.
	Defective start switch	Contact an authorized American Sanders Dealer.
Motor runs sluggish	Low voltage	Using extension cord with wire smaller than 10/3. Replace with a 10/3 extension cord.
		Using more than one extension cord. Only use one 50ft 10/3 extension cord.
		Electrically connect to American Sanders Power Booster.
	Weight added to the machine.	Remove the added weight.
	Defective handle switch	Check and replace if necessary.
	Defective run capacitor	Contact an authorized American Sander Dealer.
Fuse / circuit breaker repeatedly trips	Low voltage	Eliminate extension cord & locate a power source closer to work site.
		Have voltage checked by a qualified electrician.
		Electrically connect to American Sanders Power Booster.
	Not on a dedicated circuit	Make sure there is no other items using power on the circuit.
	Weight added to the machine.	Remove the added weight.
	Defective motor	Contact an authorized American Sander Dealer.
Machine wobbles during operation	Defective pad	One side is more dense than the other. Replace pad.
	Machine left setting on pad for extended time	Pad has taken "a set". Replace pad.
	Warped driver on brush or padholder	Check and replace if necessary.
	Driver not installed properly	Remove and install properly.
	Planetary head damaged.	Inspect head and repair or replace
Light does not work	Light switch not turned "ON".	Turn "ON" light.
	Light damaged	Check and replace if necessary.

Phoenix

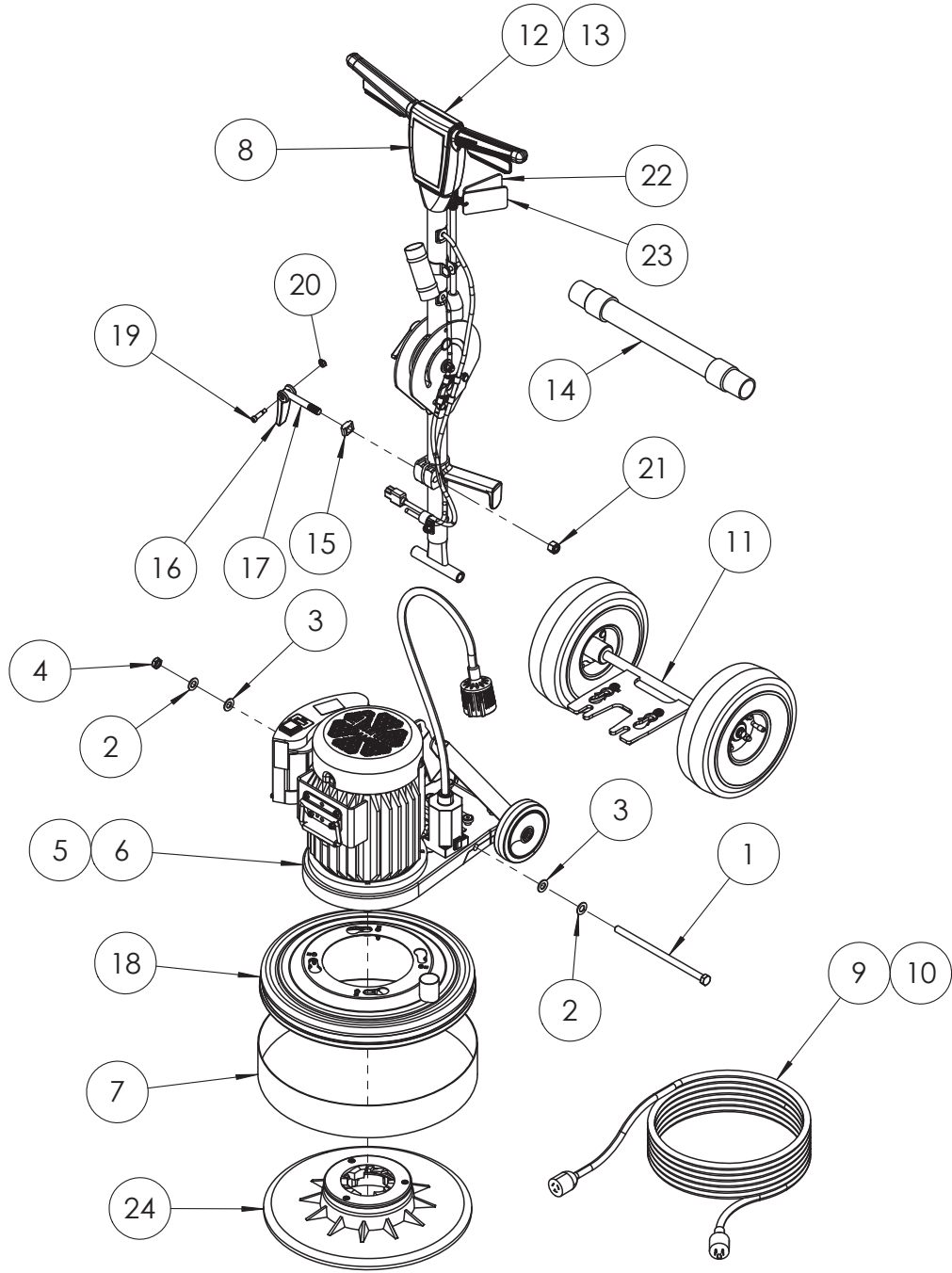
Operator's Manual

Notes:





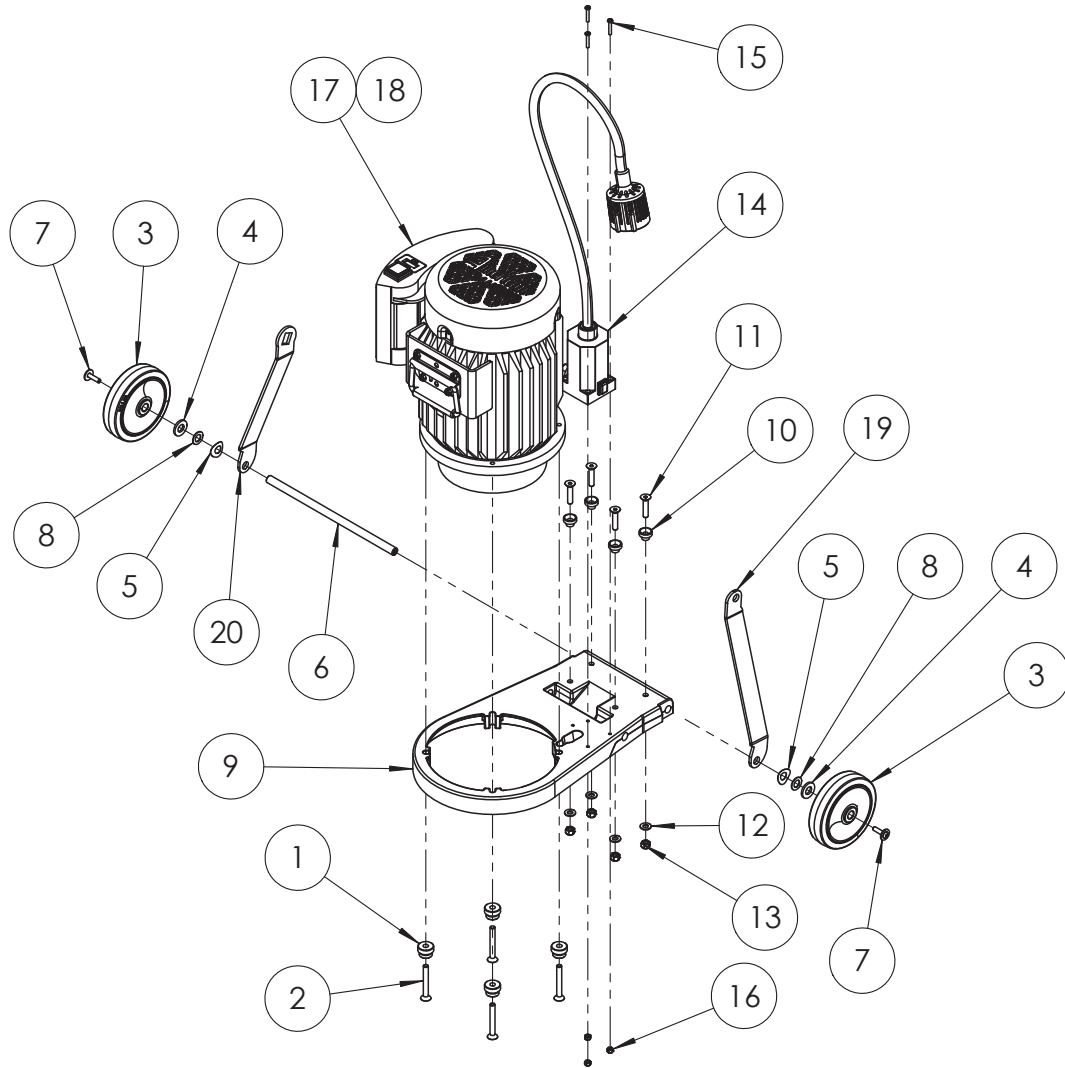
MAIN ASSEMBLY



MAIN ASSEMBLY

ITEM NO.	PART NUMBER	DESCRIPTION	07259A/ QTY.	07259B/ QTY.
1	NB086600	BOLT, HEX, 1/2-13 X 9 1/2, ZN	1	1
2	NB017100	WASHER, FLAT, NARROW, 1/2"	2	2
3	NB018000	WASHER, FLAT, NYLON, 1/2"	2	2
4	NB003100	NUT, NYLOC, JAM, 1/2-13	1	1
5	MP574500	CHASSIS ASM, PHOENIX	1	-
6	MP574501	CHASSIS ASSEMBLY, PHOENIX (AUSTRALIA)	-	1
7	30725A	SKIRT RS-16DC	1	1
8	MP576500	DECAL, HANDLE, PHOENIX	1	1
9	42200A	CORD SET-HARD SERVICE (50 FT)	1	-
10	AS084500	CORD, POWER, AUST., IEC	-	1
11	MP573900	DOLLY, PHOENIX, ASM	1	1
12	MP575000	HANDLE ASM., FOLDING	1	-
13	MP575001	HANDLE ASM., FOLDING, AUST.	-	1
14	AS139300	HOSE ASM., STRETCH	1	1
15	743850	GUIDE HANDLE LOCK CM-20	1	1
16	61912A	HANDLE CAM LOCK	1	1
17	501346	BOLT-LOCKING CAM	1	1
18	AS133500	SHROUD, 16", VAC, MOD, ASM.	1	1
19	960969	SCREW,SHLDR,5/16X3/4,5/16-18	1	1
20	NB3275	NUT, NYLOK, 1/4-20	1	1
21	920365	NUT, NYLOCK, 1/2-13	1	1
22	70175A	TAG WARNING ENG-SPN	1	1
23	70175A-FR	TAG WARNING ENG-FRN	1	1
24	MP565500	DRIVER, PAD, 16, MOD	1	1

MAIN ASSEMBLY

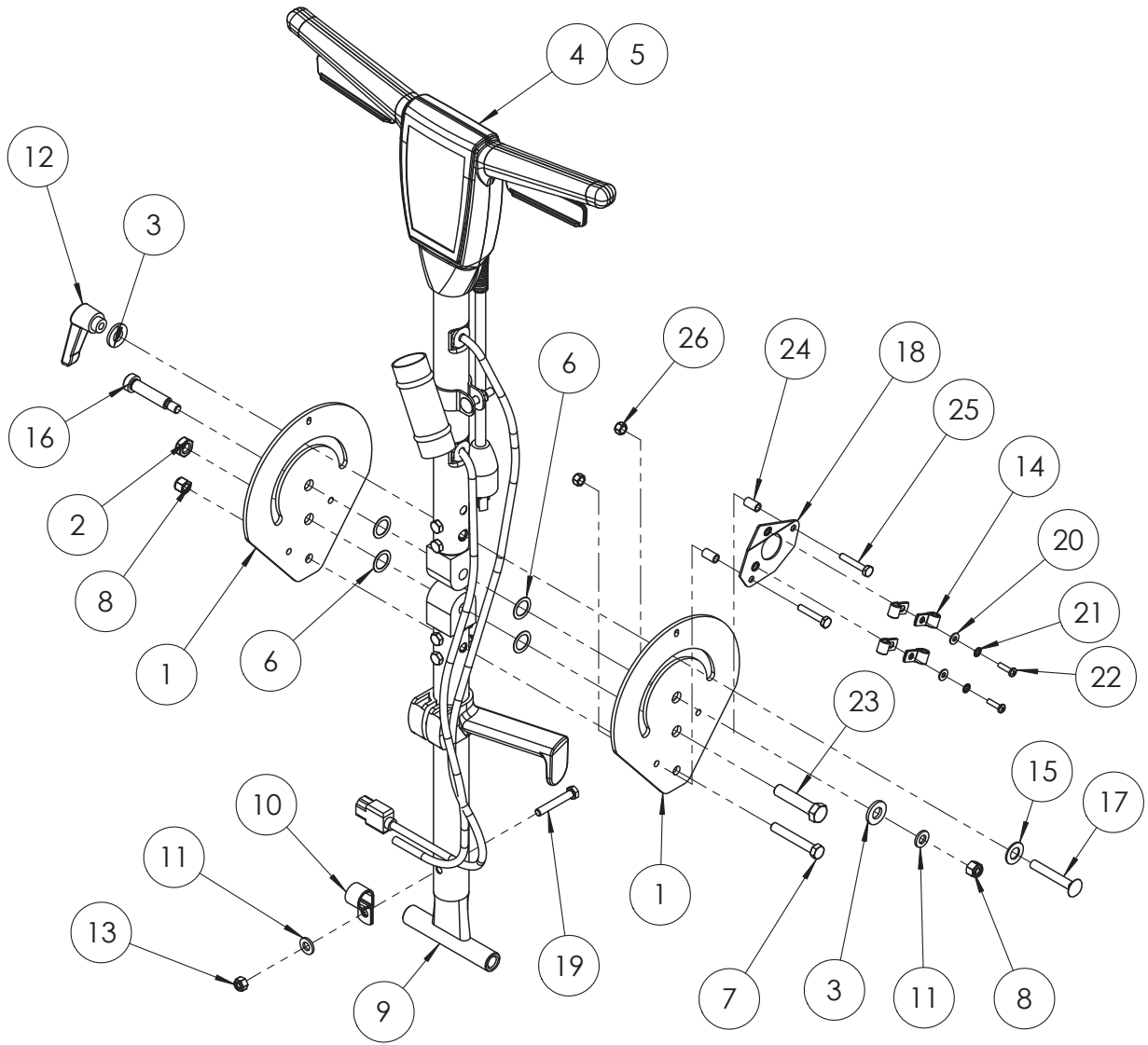


ITEM NO.	PART NUMBER	DESCRIPTION	QTY.	ITEM NO.	PART NUMBER	DESCRIPTION	QTY.
1	AS127100	LUG, MOUNTING, MODULAR	4	14	AS138200	LIGHT, LED, 35 DEG., 230V, C14	1
2	NB086800	SCREW, SHF, 5/16 X 2.5	4	15	NB073900	SCREW, PAN, PH, #8-32 X 1, ZN	3
3	39857A	WHEEL 5 POLISHER	2	16	NB9725	NUT, NYLOK, #8-32, ZN	3
4	980648	WASH-17/32 ID X 1&1/16 OD PLN	2	17	AS139700	MOTOR ASM, PHOENIX (07259A)	1
5	80295A	WASHER BOWED .516ID X 1.06OD	2	18	AS139701	MOTOR ASM. PHOENIX (07259B)	1
6	61725A	AXLE .50 X 11.34	1	19	AS139000	ARM, LINK, PHOENIX, LEFT	1
7	80292A	SCREW, BHHR SEMS, 1/4-20 X 1	2	20	AS139100	ARM, LINK, PHOENIX, RIGHT	1
8	980673	WASHER FLT 1/2 ID X 7/8 OD	2	21	AS027600	BULB, LIGHT, LED (NOT SHOWN)	1
9	MP574400	FRAME, W/ DOLLY HOLES	1	22	AS028000	SOCKET WIRE ASM., LIGHT, LED (NOT SHOWN)	1
10	MP574300	LUG, MOUNTING, MODULAR	4	23	AS028100	ROCKER SWITCH, LIGHT, LED (NOT SHOWN)	1
11	NB069500	SCREW, SHF, 5/16-18 X 1 1/2	4	24	AS028200	SWITCH, COVER, LIGHT, LED (NOT SHOWN)	1
12	NB9267	WASHER, FLAT, 5/16", ZN	4				
13	NB3265	NUT, NYLOCK, 5/16"-18	4				

RF109100

26-0002-1

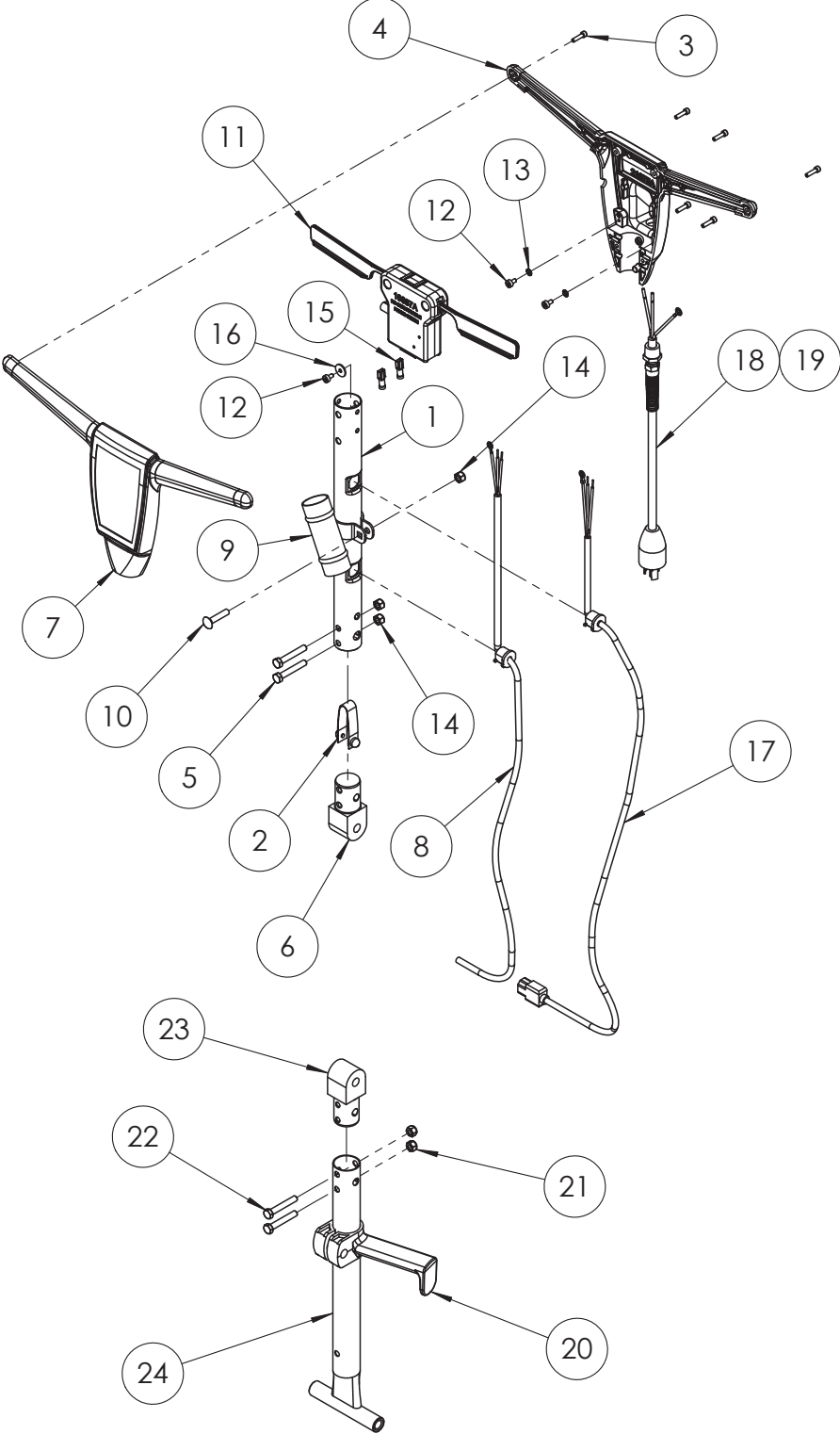
HANDLE ASSEMBLY



HANDLE ASSEMBLY

ITEM NO.	PART NUMBER	DESCRIPTION	07259A/ QTY.	07259B/ QTY.
1	MP562600	PLATE, FOLD. HANDLE	2	2
2	NB003100	NUT, NYLOC, JAM, 1/2-13	1	1
3	980648	WASH-17/32 ID X 1&1/16 OD PLN	2	2
4	MP575200	TOP ASM, FOLDING HANDLE	1	-
5	MP575201	TOP ASM, FOLDING HANDLE, AUST.	-	1
6	980088	WASHER 94 BE7	4	4
7	NB1588	BOLT,HEX,3/8-16 X2 1/2,ZN	1	1
8	NB3267	NUT, NYLOCK, 3/8-16	2	2
9	MP575100	BOTTOM ASM, FOLDING HANDLE	1	1
10	NB8130	CLAMP, 3/4" ID, RETAINER	1	1
11	87000A	WASHER .39X.75X.09 FLAT ST	2	2
12	MP5950	HANDLE, ADJUSTABLE LEVER	1	1
13	NB3265	NUT, NYLOCK, 5/16"-18	1	1
14	NB079100	CLAMP, 5/16, RETAINER	4	4
15	NB017100	WASHER, FLAT, NARROW, 1/2"	1	1
16	NB018200	SCREW, SHLDR, 1/2X2, 3/8-16	1	1
17	NB053600	BOLT, CARRIAGE, 3/8-16 X 2 1/2	1	1
18	AS139400	PLATE ASM., DUAL CORD	1	1
19	85817A	BOLT,HEX, 5/16-18X2,ZN	1	1
20	NB9645	WASHER, FLAT, #10	2	2
21	980603	WASHER, LOCK, #10, EXT	2	2
22	84808A	SCREW, PAN, PH, #10-24 X 3/4, ZN	2	2
23	NB088100	BOLT, HEX, 1/2-13 X 2 1/4, ZN	1	1
24	298215	COLLAR, SPACING	2	2
25	NB9000	BOLT,HEX,1/4-20 X 1 1/2,ZN	2	2
26	NB3275	NUT, NYLOK, 1/4-20	2	2

UPPER AND LOWER HANDLE ASSEMBLIES

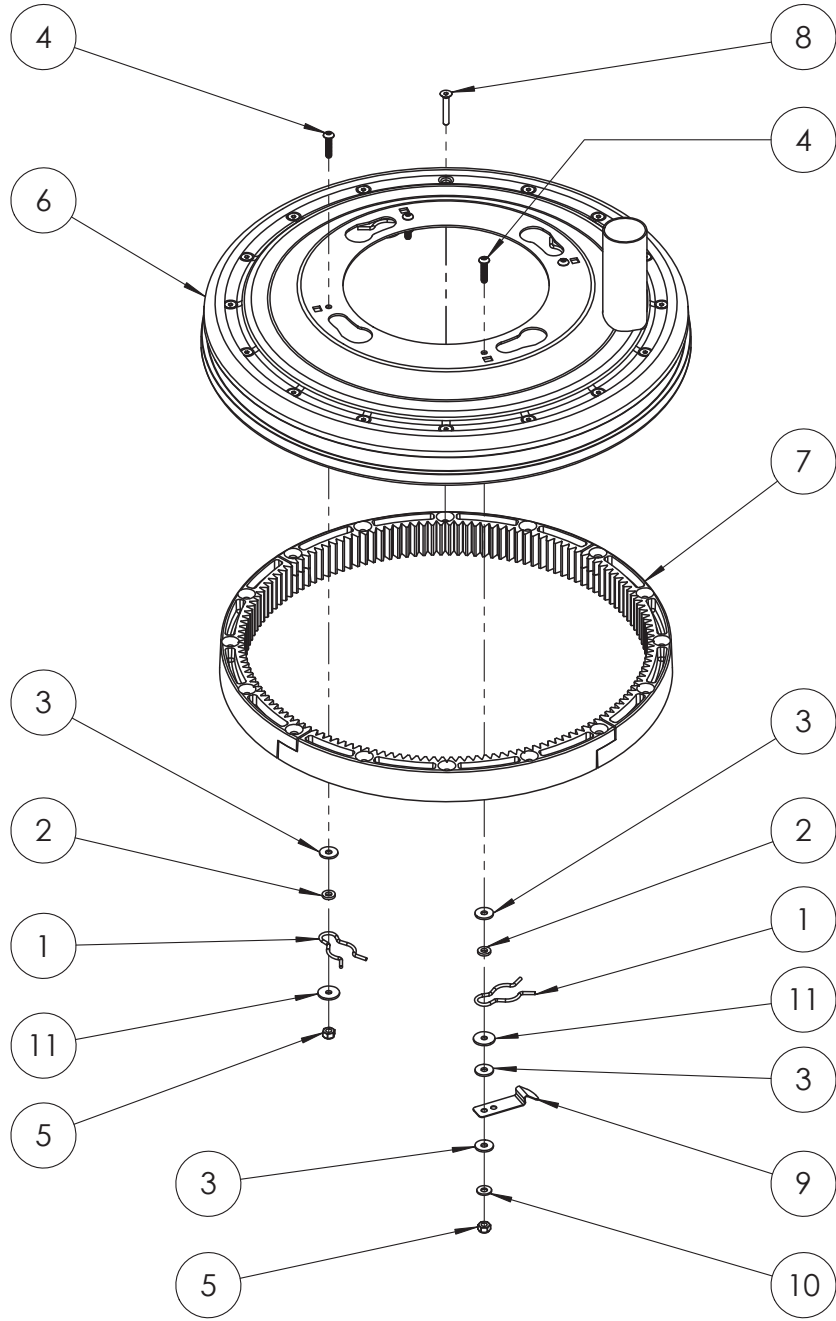


UPPER AND LOWER HANDLE ASSEMBLIES

ITEM NO.	PART NUMBER	DESCRIPTION	07259A/ QTY.	07259B QTY.
1	MP562700	HANDLE STEM, UPPER, FOLD. HAND	1	1
2	NB087900	BUTTON, TELESCOPE, 1/2 DIA	1	1
3	80284A	SCREW, SHC, #10-32 X 3/4	6	6
4	21075A	HANDLE BACK CFP	1	1
5	85817A	BOLT,HEX, 5/16-18X2,ZN	2	2
6	AS138700	TONGUE, FOLDING HANDLE TUBE	1	1
7	21074A	HANDLE FRONT CFP	1	1
8	AS138500	CORD, INTERCONNECT, 230V	1	1
9	10304A	ADAPTOR, DUST COLLECTION	1	1
10	88643A	BOLT, CARRIAGE, 5/16-18 X 1 1/2	1	1
11	10687A	MODULE INTERLOCK ASM	1	1
12	80290A	SCREW, SHF, HEX, 10-32 X 3/8, ZN	3	3
13	980603	WASHER, LOCK, #10, EXT	2	2
14	NB3265	NUT, NYLOCK, 5/16"-18	3	3
15	47709A	TERMINAL, 1/4 FIFQD, 12-10 GA	2	2
16	80291A	WASHER, FLAT, #10	1	1
17	AS138400	CORD, INTERCONNECT, LIGHT, 230	1	1
18	AS137700	CORD, ADAPTOR, 15", 14/3	1	-
19	MP512000	CORD, PIGTAIL, HANDLE, EXPORT, IEC	-	1

ITEM NO.	PART NUMBER	DESCRIPTION	QTY.
20	80150A	CLAMP, HANDLE, 1/2" BORE	1
21	NB3265	NUT, NYLOCK, 5/16"-18	2
22	85817A	BOLT,HEX, 5/16-18X2,ZN	2
23	AS138700	TONGUE, FOLDING HANDLE TUBE	1
24	MP563100	HANDLE, LOWER, FOLD. HAND	1

17" PLANETARY SHROUD ASSEMBLY

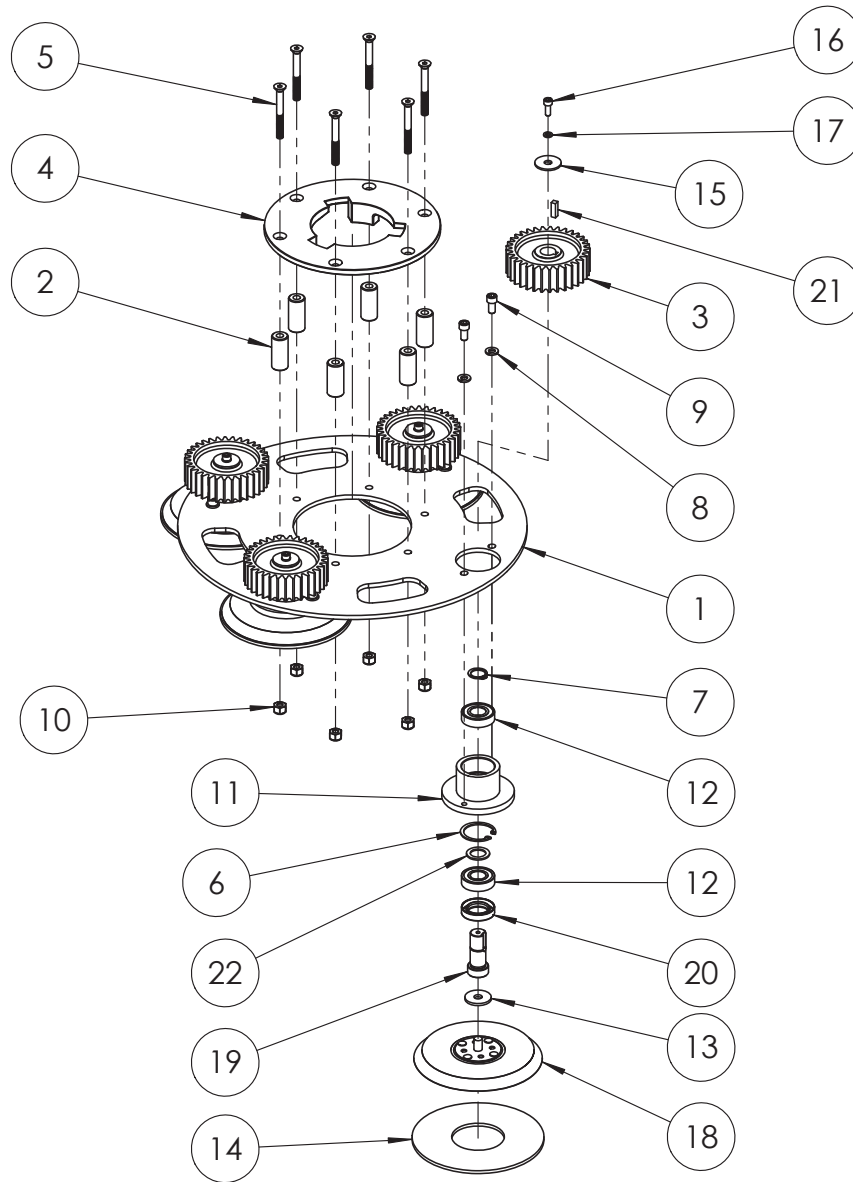


ITEM NO.	PART NUMBER	DESCRIPTION	QTY.	ITEM NO.	PART NUMBER	DESCRIPTION	QTY.
1	NB024100	PIN, HITCH, EXTERNAL	4	7	AS133800	GEAR, RING, PLANETARY	1
2	NB088400	WASHER, NYL, .44 ODX22 IDX.08T	4	8	NB086700	SCREW, SHF, 10-24 X 1.25"	16
3	NB060700	WASHER, NYLON, .218 ID x .625	6	9	AS142900	LATCH, SPRING, MODULAR SHROUD	1
4	NB049100	SCREW, BH, #10-24 X 7/8, SS	4	10	NB9645	WASHER, FLAT, SAE, #10	1
5	NB9735	NUT, NYLOK, #10-24	4	11	80291A	WASHER, FLAT, #10	4
6	AS129600	SHROUD, MOD 17, PLANETARY COMP	1				

RF098500

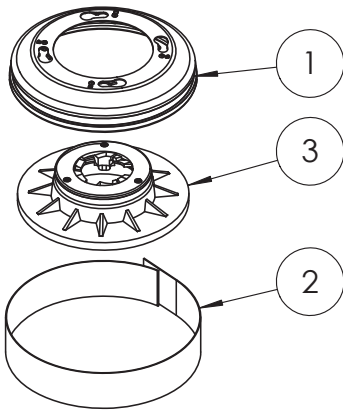
25-0083-1

PLANETARY DRIVER ASSEMBLY



ITEM NO.	PART NUMBER	DESCRIPTION	QTY.	ITEM NO.	PART NUMBER	DESCRIPTION	QTY.
1	AS129501	PLATE, DRIVER, PLANETARY	1	12	56380282	BEARING-BALL 6002 CUSTOM	8
2	NB086000	SPACER, .63 OD X .28 ID X 1.38	6	13	NB080100	WASHER, .312 X 1 X .0840-.0960	4
3	AS126700	GEAR, PLANETARY	4	14	AS003500	PAD, BACKER, FOAM, 5"	4
4	AS004600	PLATE, CLUTCH, DRIVER	1	15	87035A	WASHER, #10, FENDER	4
5	NB074900	SCREW, FHSCS, 1/4-20 X 2 1/4	6	16	NB060500	SCREW, SHD, #10-24X1/2X2, SS	4
6	747304	RING RETAIN ARM BRG 37	4	17	980650	WASHER, LOCK, #10	4
7	NB070200	RING, RETAINING, EXT	4	18	AS003400	PAD, BACKUP, 5" LOW PROFILE, ASM.	4
8	NB6110	WASHER, LOCK, 1/4"	8	19	AS127000	SHAFT, DRIVER, PLANETARY	4
9	962337	SCREW, SHC, HH, 1/4-20 X 1/2	8	20	MP497400	SEAL, SHAFT, RADIAL, 20 X 32 X 7	4
10	81102A	NUT, NYLOCK, 1/4-20	6	21	NB087500	KEY, 3/16 X 5/8	4
11	MP497600	HOUSING, BEARING, POLISHING HEAD	4	22	61355A	SPACER, CASTER WHEEL	4

MODULAR HEAD OPTIONS

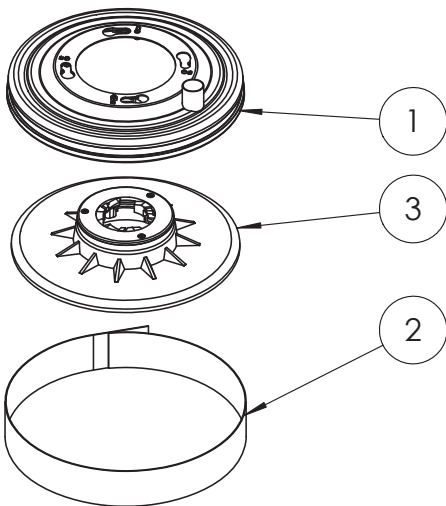
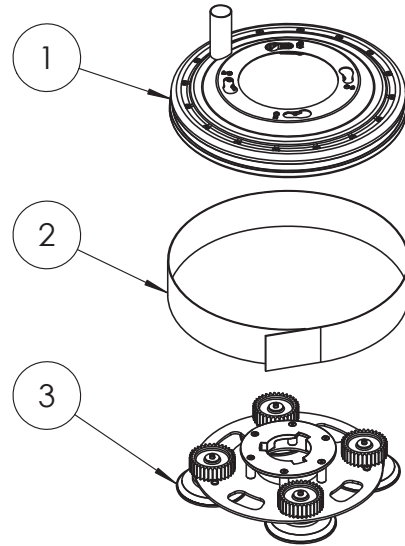


SA040005 KIT, 13" MODULAR HEAD

ITEM NO.	QTY.	PART NUMBER	DESCRIPTION
1	1	AS133200	SHROUD, 13", MOD, ASM.
2	1	AS134200	SKIRT, 13" DIA X 3"H FABRIC
3	1	MP565600	DRIVER, PAD, 13, MOD

SA040008 KIT, PLANETARY MODULAR HEAD

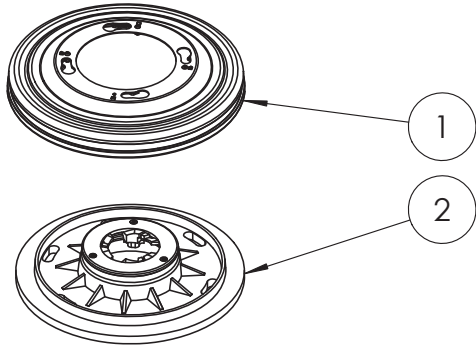
ITEM NO.	QTY.	PART NUMBER	DESCRIPTION
1	1	AS133700	SHROUD, 17", PLANET, MOD, ASM.
2	1	30725A	SKIRT RS-16DC
3	1	AS142400	DRIVER, 17", PLANETARY, ASM.



SA040003 KIT, 16" MODULAR HEAD

ITEM NO.	QTY.	PART NUMBER	DESCRIPTION
1	1	AS133500	SHROUD, 16", VAC, MOD, ASM.
2	1	30725A	SKIRT RS-16DC
3	1	MP565500	DRIVER, PAD, 16, MOD

MODULAR HEAD OPTIONS

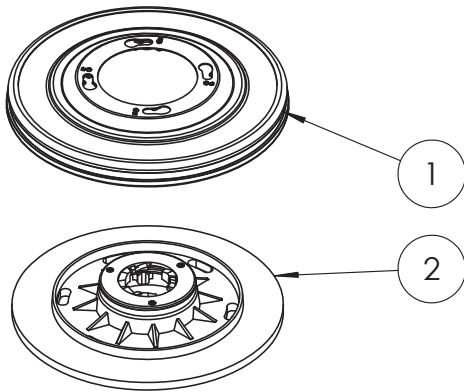
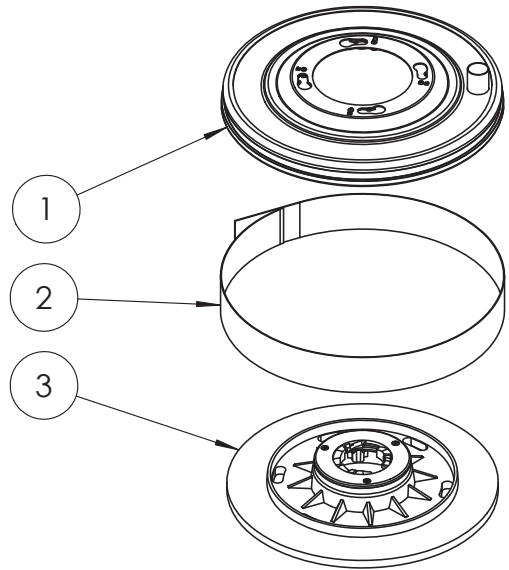


SA040002 KIT, 17" MODULAR HEAD

ITEM NO.	QTY.	PART NUMBER	DESCRIPTION
1	1	AS133300	SHROUD, 17", MOD, ASM.
2	1	MP565900	DRIVER, PAD, 17 MOD

SA040001 KIT, 20", VAC, MODULAR HEAD

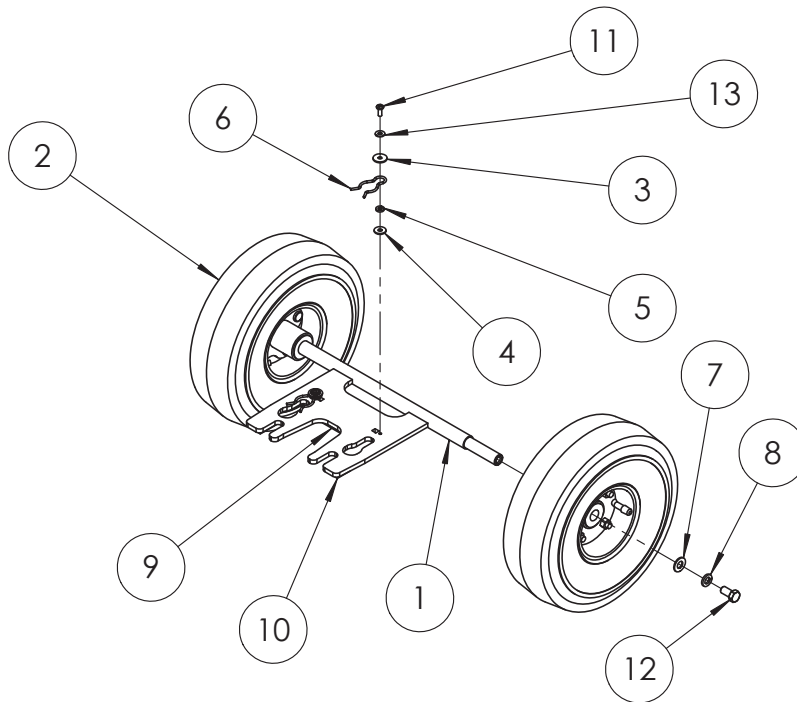
ITEM NO.	QTY.	PART NUMBER	DESCRIPTION
1	1	AS133600	SHROUD, 20", VAC, MOD, ASM.
2	1	AS058800	SKIRT, 20" DIA X3"H, FABRIC
3	1	MP565400	DRIVER, PAD, 20 MOD



SA040000 KIT, 20" MODULAR HEAD

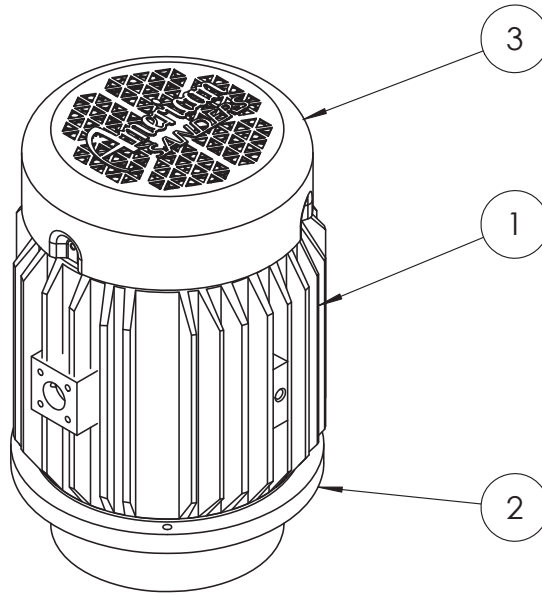
ITEM NO.	QTY.	PART NUMBER	DESCRIPTION
1	1	AS133400	SHROUD, 20" MOD, ASM.
2	1	MP565400	DRIVER, PAD, 20 MOD

DOLLY ASSEMBLY



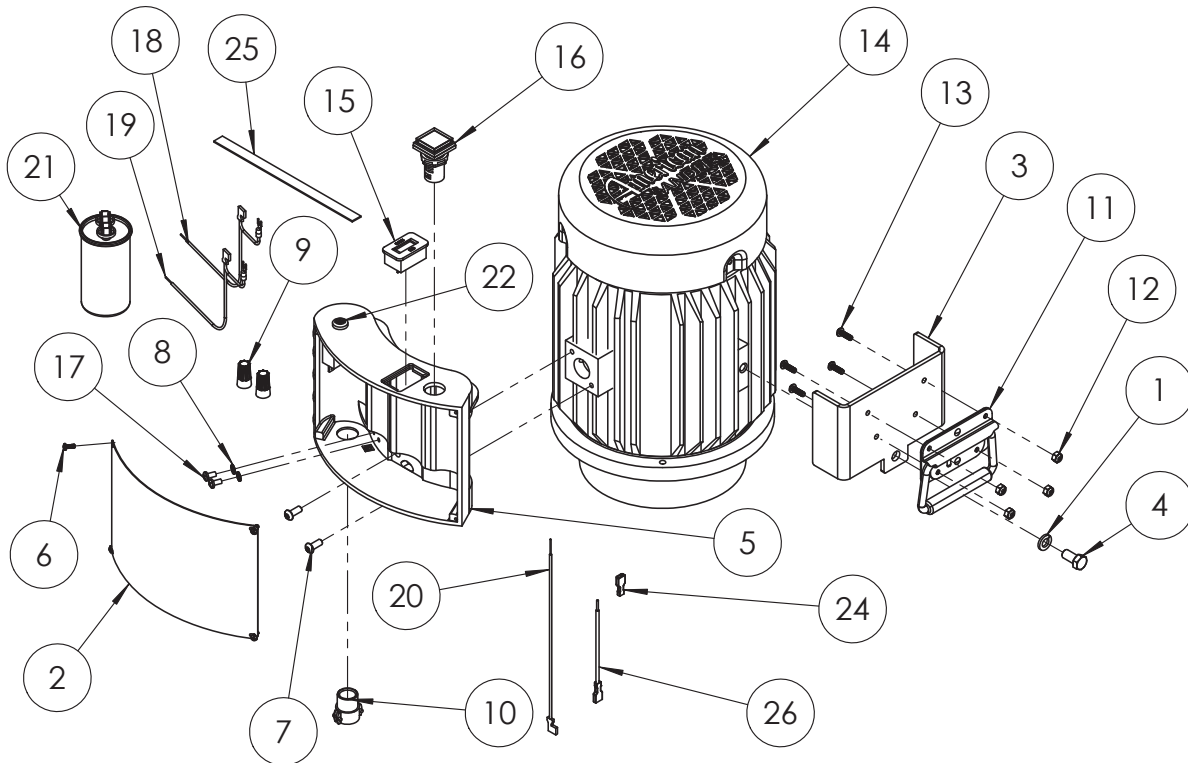
ITEM NO.	PART NUMBER	DESCRIPTION	QTY.
1	MP574000	DOLLY, PHOENIX, WELDMENT	1
2	SS1315	WHEEL, 10" GRAY	2
3	80291A	WASHER, FLAT, #10	2
4	NB060700	WASHER, NYLON, .218 ID x .625	2
5	NB088400	WASHER, NYL, .44 ODX22 IDX.08T	2
6	NB024100	PIN, HITCH, EXTERNAL	2
7	980645	WASHER, FLAT, SAE, 3/8", ZN	2
8	MX1075	WASHER, LOCK, 3/8	2
9	MP8300	VELCRO, LOOP, 1"	4"
10	MP8300	VELCRO, LOOP, 1"	2.5"
11	NB034100	SCREW, PAN, PH, #10-24 X 1/2, ZN	2
12	NB6851	BOLT, HEX, 3/8-16 X 3/4, ZN	2
13	NB9645	WASHER, FLAT, SAE, #10	2

MOTOR



ITEM NO.	PART NUMBER	DESCRIPTION	QTY.
1	MP570900	MOTOR, 3HP, 1800RPM, 230V/60HZ	1
2	MP576600	GEARBOX ASM, 3HP BALD	1
3	AS143700	COVER, FAN, 3 HP BALDOR, AMER.	1
4	AS143800	COUPLING, SHEAR, STEEL (NOT SHOWN)	1

MOTOR ASSEMBLY



ITEM NO.	PART NUMBER	DESCRIPTION	QTY.
1	980638	WASHER, LOCK, SPLIT, 3/8	1
2	MP574902	COVER, CAPACITOR BOX	1
3	AS138901	BRACKET, MOTOR LIFT HANDLE	1
4	NB6851	BOLT, HEX, 3/8-16 X 3/4, ZN	1
5	22904B	BOX, CAPACITOR, HOUR/VOLT METER	1
6	962330	SCREW, PAN, PH, #6-32 X 3/8, ZN	4
7	56109766	SCREW, BH, 1/4-20 X 5/8 TH-LOCK	2
8	980603	WASHER, LOCK, #10, EXT	2
9	170674	CONNECTOR WIRE NUT RED	2
10	170637	CONDUITCONNECTOR 3/8 2 SCREW	1
11	MP575500	HANDLE, LIFT, SPRING-LOADED	1
12	NB9375	NUT, NYLOK, #10-24	4
13	NB049200	SCREW, BH, #10-24 X 5/8, SS	4
14	MP575700	MOTOR, 3HP, PHOENIX	1
15	AS007800	METER, HOUR, AC/DC, DIGITAL	1
16	AS142200	METER, VOLT/AMP, AC	1
17	962015	SCREW, PAN, PH, #10-24 X 3/8, ZN	2
18	AS142300	WIRE, VOLT/AMP METER, WHITE	1
19	AS142800	WIRE, VOLT/AMP METER, BLACK	1
20	AS006400	WIRE, CAPACITOR, JUMPER	1
21	41306A	CAPACITOR RUN (07259B ONLY)	1
22	AS147000	BREAKER, CIRCUIT, 12A, 250V	1
24	NB1085	CONNECTOR, 14-16, .250 ULTRA F	1
25	MP505000	TAPE, 1/2", MOLDING ATTACHMENT	0.0111
26	AS147100	JUMPER, BREAKER, BLACK, 5"	1

Limited Warranty

Phoenix Rotary Sander

TO QUALIFY FOR THIS WARRANTY

- (1) Machine must be registered within 30 days from the time of purchase on a form provided by American Sanders. Your American Sanders Distributor is responsible for the registration of your machine. Please cooperate with your Distributor in supplying necessary information on the card.
- (2) The machine must have been purchased from American Sanders or an authorized American Sanders Distributor.
- (3) This warranty extends to the original purchaser only and is not transferable to subsequent owners.

TIME PERIODS

ONE (1) YEAR WARRANTY - For the Phoenix Rotary Sander. Warranted to be free from defects in material and workmanship for a period of one (1) year from the date of purchase by the original owners. (See Exclusions)

EXCLUSIONS (Not Covered by Warranty)

- (1) Expendable wear items and parts that fail through normal wear by reason of their characteristics (cords, pads, pad holders, belts, wheels, carbon motor brushes, bulbs, filters, bags, or other consumable parts).
- (2) This warranty does not extend to parts affected by misuse, neglect, abuse, accidents, damage in transit, overloading the capacity of the machine, failure due to lack of proper maintenance or care as described in the operating and maintenance instructions. All defective parts must be returned to the distributor for credit.
- (3) Minor adjustments, such as tightening of screws or bolts not connected with the replacement of parts, are not covered.
- (4) Repairs or alterations by an organization other than the factory or an Authorized Service Center are not covered and will void any American Sanders warranty as to the parts or systems repaired or altered by a non-authorized organization.

THE OBLIGATION OF AMERICAN SANDERS

- (1) The obligation of American Sanders under this warranty is limited to repairing or replacing, at its option, any part which is proven to be defective in material or workmanship under normal use for the applicable period stated above.
- (2) Warranty repairs will be made by your American Sanders Distributor without charge for parts and labor. They will be compensated with a warranty labor rate of \$75.00 per hour, for the first year of ownership.
- (3) Parts repaired or replaced under this warranty are warranted only during the balance of the original warranty period. All defective parts replaced under these warranties become the property of American Sanders.

WARRANTY SERVICE

To obtain warranty service, take your machine and proof of purchase to any authorized American Sander Distributor. American Sanders will not reimburse expenses for service calls or travel. For the Distributor in your area, call American Sanders Customer Service Department at 800-367-3550 or 336-372-8080. If you are dissatisfied with the service that you receive, call or write American Sanders Customer Service Department for further assistance.

INSTRUCTIONS AND CONDITIONS FOR WARRANTY

REIMBURSEMENT

- Order replacement part: Orders will be processed and charged, as normal procedure.
- Call American Sanders for R/A number.
- You will need the Machine Serial Number and the Machine Model Number.

- Parts must be returned, accompanied with the R/A number to be eligible for warranty credit.
- All Warranty Parts will be shipped prepaid UPS Ground, any other method will be at the recipients expense.
- Freight on any Warranty Part after 30 days must be paid for by the Purchaser.
- Warranty labor rate is \$75.00 per hour.
- Credit will be issued upon completion of the above steps, at the above rates.

Transportation of hazardous waste or contaminated equipment is subject to various laws and regulations. In returning machines, parts, or accessories under this limited warranty, the end user must certify in writing that the machines, parts, or accessories being returned have not been used for handling, clean up, or disposal of hazardous waste or hazardous materials including but not limited to such things as asbestos, anthrax etc. or if the machines, parts, or accessories being returned have been used for handling, clean up, or disposal of hazardous waste or hazardous materials, then the end user must have the machines, parts or accessories decontaminated by licensed and qualified decontamination professionals and provide written certification of this decontamination signed by the decontamination professionals. These machines, parts or accessories are to be returned only to the local American Sanders Service Center for warranty service along with decontamination certification.

DISCLAIMER OF CONSEQUENTIAL

THERE ARE NO WARRANTIES THAT EXTEND BEYOND THE DESCRIPTION OF THE LIMITED WARRANTIES STATED WITHIN. NO OTHER WARRANTY, EXPRESSED OR IMPLIED, INCLUDING BUT NOT LIMITED TO ANY IMPLIED WARRANTY OF MERCHANTABILITY OR FITNESS FOR A PARTICULAR PURPOSE, IS MADE EXCEPT AS EXPRESSLY STATED HEREIN. ANY STATUTORY IMPLIED WARRANTIES, INCLUDING ANY WARRANTY OF MERCHANTABILITY OR FITNESS FOR A PARTICULAR PURPOSE, THAT ARE IMPOSED BY LAW DESPITE THE EXPRESS LIMITATION OR WARRANTIES ABOVE, ARE EXPRESSLY LIMITED TO THE DURATION OF THE WRITTEN WARRANTY. BUYER UNDERSTANDS, ACKNOWLEDGES AND AGREES THAT THE REMEDIES PROVIDED UNDER THIS LIMITED WARRANTY ARE THE SOLE AND EXCLUSIVE REMEDIES AVAILABLE TO THE BUYER. AMERICAN SANDERS DISCLAIMS ANY RESPONSIBILITY FOR LOSS OF USER TIME OF THE AMERICAN SANDERS MACHINE OR ANY OTHER INCIDENTAL OR CONSEQUENTIAL DAMAGES. THIS INCLUDES, BUT NOT LIMITED TO INDIRECT, SPECIAL OR CONSEQUENTIAL DAMAGES ARISING OUT OF OR IN CONNECTION WITH THE FURNISHING, PERFORMANCE, USE OF OR INABILITY TO USE THE MACHINE. ANY EXTENSIONS OF OR MODIFICATIONS MADE TO THIS WARRANTY BY A DEALER/DISTRIBUTOR OF AMERICAN SANDERS ARE THE SOLE RESPONSIBILITY OF THE DEALER/DISTRIBUTOR.

American Sanders reserves the right to change its warranty policy without notice.

Copyright 2025 American Sanders

Garantía limitada

Phoenix Rotary Sander

PARA CALIFICAR PARA ESTA GARANTÍA

- (1) El equipo debe registrarse dentro de los 30 días a partir de la fecha de compra en un formulario proporcionado por American Sanders. Su distribuidor American Sanders es responsable del registro de su equipo. Coopere con su distribuidor brindando la información necesaria en la tarjeta.
- (2) El equipo debe haberse comprado en American Sanders o con un distribuidor autorizado de American Sanders.
- (3) Esta garantía se extiende al comprador original solamente y no se puede transferir a otros propietarios.

PERÍODOS DE TIEMPO

GARANTÍA DE UN (1) AÑO: Para el Phoenix Rotary Sander. Garantizado por estar libres de defectos en material y mano de obra por un período de un (1) año a partir de la fecha de compra por parte de los propietarios originales. (Consulte Exclusiones)

EXCLUSIONES (No cubiertas por la garantía)

- (1) Artículos desgastables y piezas que fallan debido al desgaste normal por sus características (cordones, almohadillas, base de sujeción, bandas, ruedas, cepillos de motor de carbón, bombillas, filtros, bolsas u otras piezas consumibles).
- (2) Esta garantía no se extiende a partes afectadas por mal uso, negligencia, abuso, accidentes, daños en tránsito, sobrecarga de la capacidad de la máquina, fallas debido a la falta de mantenimiento o cuidado apropiados como se describe en las instrucciones de operación y mantenimiento. Todas las partes defectuosas se deben devolver al distribuidor para recibir un crédito.
- (3) Los ajustes menores, como el ajuste de tornillos o pernos no conectados con el reemplazo de piezas, no están cubiertos.
- (4) Las reparaciones o modificaciones realizadas por una organización que no sea la fábrica o un Centro de Servicio Autorizado no están cubiertas y anularán cualquier garantía de American Sanders en cuanto a las piezas o sistemas reparados o modificados por una organización no autorizada.

LA OBLIGACIÓN DE AMERICAN SANDERS

- (1) La obligación de American Sanders bajo esta garantía se limita a la reparación o reemplazo, a su elección, de cualquier parte que se compruebe tiene defectos de material o mano de obra durante el uso normal por el período aplicable antes mencionado.
- (2) El distribuidor de American Sanders realizará las reparaciones de garantía sin cargo por piezas y mano de obra. Ellos recibirán una compensación con una tarifa de mano de obra de garantía de \$75.00 por hora, por el primer año de propiedad.
- (3) Las partes reparadas o reemplazadas bajo esta garantía están cubiertas por la garantía solo durante el resto del período de la garantía original. Todas las partes defectuosas reemplazadas bajo estas garantías se convierten en propiedad de American Sanders.

SERVICIOS DE GARANTÍA

Para obtener servicio de garantía, lleve su equipo y prueba de compra a cualquier distribuidor autorizado de American Sanders. American Sanders no reembolsará los gastos por las llamadas o viajes para el servicio. Para el Distribuidor en su área, llame al Departamento de Servicio al Cliente de American Sanders al 800-367-3550 o al 336-372-8080. Si no está satisfecho con el servicio que recibe, llame o escriba al Departamento de Servicio al Cliente de American Sanders para recibir más ayuda.

INSTRUCCIONES Y CONDICIONES PARA EL REEMBOLSO DE GARANTÍA

- Pida la pieza de reemplazo: Los pedidos se procesarán y cobrarán, como un procedimiento normal.
- Llame a American Sanders para obtener el número de R/A.
- Necesitará el número de serie del equipo y el número de modelo del equipo.
- Las piezas se deben devolver, acompañadas con el número de R/A para ser elegible para el crédito por la garantía.

- Todas las piezas de garantía se deberán enviar prepagadas por servicio terrestre de UPS, cualquier otro método será a costa del beneficiario.
- El Comprador debe pagar el flete para cualquier pieza de la garantía después de 30 días.
- La tarifa de mano de obra de la garantía es de \$75.00 por hora.
- El crédito se emitirá al completar los pasos anteriores, en las tarifas anteriores.

El transporte de desechos peligrosos o equipos contaminados está sujeto a varias leyes y regulaciones. Al devolver equipo, piezas o accesorios según esta garantía limitada, el usuario final debe certificar por escrito que el equipo, piezas o accesorios que se devuelven no se han utilizado para la manipulación, limpieza o eliminación de residuos peligrosos o materiales peligrosos, incluyendo pero no limitado a cosas tales como asbestos, ántrax, etc. o si el equipo, piezas o accesorios que se devuelven han sido utilizados para la manipulación, limpieza o eliminación de residuos peligrosos o materiales peligrosos, entonces el usuario final debe tener el equipo, piezas o accesorios descontaminados por profesionales de la descontaminación autorizados y calificados y que proporcionen una certificación por escrito de esta descontaminación firmada por los profesionales de la descontaminación. Estos equipos, piezas o accesorios deben devolverse solo al Centro de Servicio American Sanders de la localidad para obtener el servicio de garantía junto con la certificación de descontaminación.

DESCARGO DE RESPONSABILIDAD DE DAÑOS Y PERJUICIOS

NO HAY GARANTÍAS QUE SE EXTIENDAN MÁS ALLÁ DE LA DESCRIPCIÓN DE LAS GARANTÍAS LIMITADAS INDICADAS. NINGUNA OTRA GARANTÍA, EXPRESA O IMPLÍCITA, INCLUYENDO PERO NO LIMITADO A CUALQUIER GARANTÍA IMPLÍCITA DE COMERCIALIZACIÓN O IDONEIDAD PARA UN PROPÓSITO EN PARTICULAR, SE HACE EXCEPTO COMO SE INDICA EXPRESAMENTE AQUÍ. CUALQUIER GARANTÍA LEGAL IMPLÍCITA, INCLUIDA CUALQUIER GARANTÍA DE COMERCIALIZACIÓN O IDONEIDAD PARA UN PROPÓSITO EN PARTICULAR, QUE SEA IMPUESTA POR LA LEY A PESAR DE LA LIMITACIÓN EXPRESA O LAS GARANTÍAS ANTERIORES, ESTÁ EXPRESAMENTE LIMITADA A LA DURACIÓN DE LA GARANTÍA ESCRITA. EL COMPRADOR ENTIENDE, RECONOCE Y ACEPTA QUE LOS RECURSOS PROVISTOS BAJO ESTA GARANTÍA LIMITADA SON LOS ÚNICOS Y EXCLUSIVOS RECURSOS DISPONIBLES PARA EL COMPRADOR. AMERICAN SANDERS SE LIBERA DE TODA RESPONSABILIDAD POR LA PÉRDIDA DE TIEMPO DEL USUARIO DEL EQUIPO AMERICAN SANDERS O CUALQUIER OTRO DAÑO INCIDENTAL O CONSECUENCIAL. ESTO INCLUYE, PERO NO ESTÁ LIMITADO A DAÑOS INDIRECTOS, ESPECIALES O CONSECUENCIALES DERIVADOS DE O RELACIONADOS CON EL SUMINISTRO, EL FUNCIONAMIENTO, EL USO O LA INCAPACIDAD DE USAR EL EQUIPO. CUALQUIER EXTENSIÓN O MODIFICACIÓN HECHA A ESTA GARANTÍA POR UN CONCESIONARIO/DISTRIBUIDOR DE AMERICAN SANDERS SON RESPONSABILIDAD EXCLUSIVA DEL CONCESIONARIO/DISTRIBUIDOR.

American Sanders se reserva el derecho de cambiar su política de garantía sin previo aviso.

Copyright 2025 American Sanders

Garantie limitée

Ponceuse rotative à deux vitesses Phoenix

POUR ÊTRE ADMISSIBLE À LA PRÉSENTE GARANTIE

- (1) L'appareil doit être inscrit dans les 30 jours suivant la date d'achat à l'aide de la fiche fournie par American Sanders. L'enregistrement de votre appareil s'effectue auprès de votre distributeur American Sanders. Veuillez lui fournir tous les renseignements exigés sur la fiche.
- (2) L'appareil doit avoir été acheté auprès d'American Sanders ou d'un distributeur American Sanders autorisé.
- (3) La présente garantie n'est offerte qu'à l'acheteur initial et n'est pas transférable aux propriétaires subséquents.

PÉRIODES

GARANTIE D'UN (1) AN — Pour le modèle de ponceuse rotative à deux vitesses Phoenix. Garanti contre tout défaut de matériaux et de main-d'œuvre pour une période d'un (1) an à compter de la date d'achat par le propriétaire initial. (Se reporter aux exclusions.)

EXCLUSIONS (Non couvert par la garantie)

- (1) Les produits et pièces consommables qui font défaut par suite d'une usure normale en raison de leurs caractéristiques (cordons, patins, supports à patin, courroies, roulettes, balais de moteur en carbone, ampoules, filtres, sacs ou autres pièces consommables).
- (2) Cette garantie ne couvre pas les pièces brisées par suite d'abus, de mésusage, de négligence, d'accidents, de bris lors du transport, d'une surcharge de la capacité de l'appareil, d'une défaillance due au manque d'entretien ou de soins adéquats tels qu'ils sont décrits dans les instructions d'utilisation et d'entretien. Vous devez retourner les pièces défectueuses au distributeur pour vous les faire créditer.
- (3) Les ajustements mineurs, tels que le serrage de vis ou de boulons sans lien avec le remplacement de pièces, ne sont pas couverts.
- (4) Les réparations ou modifications réalisées par toute organisation autre que l'usine ou un centre de service autorisé ne sont pas couvertes et annuleront la garantie American Sanders en ce qui concerne les pièces ou systèmes réparés ou modifiés par une organisation non autorisée.

LES OBLIGATIONS D'AMERICAN SANDERS

- (1) Les obligations d'American Sanders en vertu de cette garantie se limitent à la réparation ou au remplacement, à sa discrétion, de toute pièce présentant un défaut avéré de matériaux ou de main-d'œuvre dans le cadre d'une utilisation normale pour la période applicable énoncée plus haut.
- (2) Les réparations sous garantie seront effectuées par votre distributeur American Sanders sans frais pour les pièces et la main-d'œuvre. Ce dernier sera rémunéré au taux de main-d'œuvre de 75,00 \$/h pour la première année de possession.
- (3) Les pièces réparées ou remplacées en vertu de cette garantie ne sont garanties que pendant le restant de la période originale de garantie. Toutes les pièces défectueuses remplacées en vertu de ces garanties deviennent la propriété d'American Sanders.

SERVICE SOUS GARANTIE

Pour obtenir du service sous garantie, apportez votre appareil et une preuve d'achat chez un distributeur American Sanders autorisé. American Sanders ne remboursera pas de frais engagés en lien avec des appels de service ou des déplacements. Pour connaître le distributeur de votre région, communiquez avec le service à la clientèle d'American Sanders au 800 367-3550 ou au 336 372-8080. Si vous n'êtes pas satisfait du service reçu, communiquez avec le service à la clientèle d'American Sanders pour obtenir de l'aide.

INSTRUCTIONS ET CONDITIONS POUR L'OBTENTION D'UN REMBOURSEMENT SOUS GARANTIE

- Commande de pièce de rechange : Les commandes sont traitées et facturées comme toute procédure normale.

- Communiquez avec American Sanders pour obtenir un numéro d'autorisation de renvoi.
- Il vous faudra le numéro de série et le numéro de modèle de l'appareil.
- Vous devez joindre le numéro d'autorisation de renvoi aux pièces renvoyées pour être admissible au crédit en vertu de la garantie.
- Toutes les pièces sous garantie sont expédiées UPS Ground prépayé; tout autre moyen d'expédition est au frais du destinataire.
- Le transport de toute pièce sous garantie après 30 jours doit être payé par l'acheteur.
- Le taux de main-d'œuvre sous garantie est de 75,00 \$/h.
- Le crédit est émis une fois toutes les étapes précédentes terminées, aux tarifs précités.

Le transport de déchets dangereux ou d'équipements contaminés est assujéti à différentes lois et réglementations. Au moment de retourner des appareils, des pièces ou des accessoires en vertu de cette garantie limitée, l'utilisateur final doit attester par écrit que les appareils, pièces ou accessoires retournés n'ont pas été utilisés pour la manipulation, le nettoyage ou l'élimination de déchets dangereux ou de matières dangereuses, y compris, mais sans s'y limiter, amiante, anthrax, etc. ou, si les appareils, pièces ou accessoires retournés ont été utilisés pour la manipulation, le nettoyage ou l'élimination de déchets dangereux ou de matières dangereuses, alors l'utilisateur final doit faire décontaminer les appareils, pièces ou accessoires par un professionnel de la décontamination qualifié et agréé et fournir une attestation écrite de cette décontamination signée par le professionnel de la décontamination. Ces appareils, pièces ou accessoires ne doivent être retournés qu'au centre de service American Sanders local pour un service sous garantie et être accompagnés de l'attestation de décontamination.

CLAUSE DE NON-RESPONSABILITÉ

AUCUNE GARANTIE N'EST CONSENTIE AU-DELÀ DE LA DESCRIPTION DES PRÉSENTES GARANTIES LIMITÉES. AUCUNE AUTRE GARANTIE, EXPRESSE OU IMPLICITE, Y COMPRIS, MAIS SANS S'Y LIMITER, TOUTE GARANTIE IMPLICITE DE QUALITÉ MARCHANDE OU D'ADAPTATION À UN EMPLOI PARTICULIER, N'EST FAITE HORMIS CELLES INDIQUÉES AUX PRÉSENTES. TOUTE GARANTIE LÉGALE IMPLICITE, Y COMPRIS TOUTE GARANTIE DE QUALITÉ MARCHANDE OU D'ADAPTATION À UN EMPLOI PARTICULIER, QUI EST IMPOSÉE PAR LA LOI MALGRÉ LES LIMITES OU GARANTIES EXPRESSES PRÉCÉDENTES, EST EXPRESSÉMENT LIMITÉE À LA DURÉE DE LA GARANTIE ÉCRITE. L'ACHETEUR COMPREND, RECONNAÎT ET CONVIENT QUE LE RECOURS PRÉVU EN VERTU DE CETTE GARANTIE LIMITÉE CONSTITUE LE SEUL ET UNIQUE RECOURS À SA DISPOSITION. AMERICAN SANDERS SE DÉGAGE DE TOUTE RESPONSABILITÉ À L'ÉGARD DU TEMPS D'UTILISATION DE L'APPAREIL AMERICAN SANDERS PERDU ET DE TOUT AUTRE DOMMAGE ACCESSOIRE OU CONSÉCUTIF. CELA COMPREND, MAIS SANS S'Y LIMITER, LES DOMMAGES INDIRECTS, PARTICULIERS OU CONSÉCUTIFS DÉCOULANT DIRECTEMENT OU INDIRECTEMENT DE LA PRESTATION, DE LA PERFORMANCE, DE L'UTILISATION DE L'APPAREIL OU DE L'IMPOSSIBILITÉ DE L'UTILISER. TOUTE PROLONGATION OU MODIFICATION DE CETTE GARANTIE EFFECTUÉE PAR UN CONCESSIONNAIRE OU UN DISTRIBUTEUR D'AMERICAN SANDERS RELÈVE ENTIÈREMENT DU CONCESSIONNAIRE OU DU DISTRIBUTEUR.

American Sanders se réserve le droit de changer sa politique de garantie sans préavis.

Copyright 2025 American Sanders



American Sanders
an AMANO Company

1 Eclipse Rd ● PO Box 909
Sparta, North Carolina 28675 ● USA
www.pioneereclipse.com
www.americansanders.com

+1-336-372-8080
1-800-367-3550
Fax 1-336-372-2913